

RV

Resort View



Front Page
Magical Moments
in 2013

On Par
10 Hardest Shots
in Golf



马
年
吉
祥

万
事
如
意

Usher in the
Lunar New Year with
our Prosperity Snack Platter
+ A Jug of Beer!



Ngoh Hiang + Deep Fried Squid

\$28.80 (Member) **\$34.80** (Non-Member)



Kranji Sanctuary Golf Course
The Terrace Cafe
50 Neo Tiew Lane 3
Tel: 6791 1948
Email: nsrcc@JunHang.com.sg



Contents

Seen & Heard

- 4 Recap of 2013 Snooker Bi-Monthly Medal
The Voices of NSRCC
- 5 Awesome Acts of Honesty
- 6 Annual Bowling Championship 2013
Lucky Winners of the Membership Survey Draw
Announced
- 7 Take Five with Bowling Coach Benjamin Hong

Updates

- 8 CNY Operation Hours

Contest

- 9 NSRCC Mini Instagram Contest 2014

Front page

- 10 Magical Moments in 2013

CNY Feature

- 12 Embracing the Year of the Wood Horse

On Par

- 15 Charity Golf 2014
- 16 Meet Singapore's Rising Golf Stars Competing at HSBC
Youth Golf Challenge

- 17 NSRCC Inclement Weather Policy
- 18 10 Hardest Shots in Golf
- 19 Golf 101: Ball Unplayable
- 20 Hole-in-One Fun Facts
- 21 Hole-in-One Achievers

Upcoming Events & Promos

- 22 Hokkaido Cake Baking Class
Weekend Flea Market
Problem Solving Workshop
- 23 Vocal Class 2nd Intake
Bicycle Maintenance by Park Tool School
Snooker Kakis 2014

In every issue

- 2 Office Bearers
At your service
- 3 The Editor Speaks
- 24 Affiliated Clubs
- 25 Facilities Directory



4



30

Editor
Tan Sze Wah

Editorial Team
Looi Wan Hui, Teo Whee Sian Maureen,
Jeffrey Low, Stanley Ho,
Goh Ying Ying, Ivy Ho and Nurazura

is published bi-monthly by
National Service Resort & Country Club
10 Changi Coast Walk, Singapore 499739
Tel: 6542 8288 Fax: 6545 6508
MICA (P) No. 029/10/2013

Email Address
corpcomms@nsrcc.com.sg

Designed & Printed by
Semco Design Communications Pte Ltd

office bearers

PATRON
Prime Minister of Singapore
Lee Hsien Loong

BOARD OF DIRECTORS
Chairman
Chan Yeng Kit
Deputy Chairmen
Tan Tee How
LG Ng Chee Meng
Directors
Lai Chung Han
Teo Eng Dih

DISCIPLINARY COMMITTEE
Chairman
Hui Choon Kuen
Members
Keok Tong San
Leong Chun Kong Steven
Low Soon Heng
Rajan s/o Sankaran Nair
Siva Shanmugam
Toh Eng Kian Kelvin
Yong Eng Wah

GENERAL COMMITTEE
President
LG Ng Chee Meng
Vice President
Comr Yap Wee Teck Eric
Teo Eng Dih
Captain
Tan Kah Han
Members
BG (NS) Tung Yui Fai
Goh Eng Yau Laurence
Hui Choon Kuen
Kwa Hian Djoe Andrew
Lee Chee Peng
Leong Chee Keen Edward
Tan Sze Wah
Wong Liang Chin Jeffrey

ENGAGEMENT COMMITTEE
Chairman
Kwa Hian Djoe Andrew
Members
Cynthia Lee
Seah Chin Aik
Danny Sin
Winston Toh

RESORT & FACILITIES COMMITTEE
Chairman
Lee Chee Peng
Vice Chairman
Too Chee Keong Patrick
Convenor (Bowling)
Richard Soh
Convenor (Tennis/Squash)
Lee Cher Tong David
Convenor (Family Recreation)
Florence Khemlani
Members
Looi Wan Hui
Kuek Chiew Peng
Tang Ing Koon Derrick
Quek Siew Liang

EDITORIAL COMMITTEE
Honorary Editor/Chairman
Tan Sze Wah
Members
Looi Wan Hui
Teo Whee Sian Maureen

AUDIT COMMITTEE
Chairman
Goh Eng Yau Laurence
Members
Leong Chee Keen Edward
Wong Liang Chin Jeffrey

GREENS COMMITTEE
Captain
Tan Kah Han
Vice Captains
Chong Chin Wah Jenny
Tay Kian Hwee David
Members
Chew Chong Aun Shaun
Chua Ling Ling Sally
Chua Yam Seng
Huang Mee Foh David
Lim Cher Meng Henry
Tan Yong Hui Brian
Tay Siak Meng William
Teo Whee Sian Maureen

HANDICAP COMMITTEE
Ng Kim Teck Vincent

ESTABLISHMENT COMMITTEE
Chairman
Teo Eng Dih
Members
Leong Chee Keen Edward
Lee Meng Guek Ivy
Wong Liang Chin Jeffrey

at your service

GENERAL MANAGER
Ng Heng Chew
gm@nsrcc.com.sg

DIRECTOR
Business & Resort Operations
Stanley Ho
stanley@nsrcc.com.sg

Golf
James Sua, CGCS
jamessua@nsrcc.com.sg

MANAGERS
Golf Changi
Jason Yeo
jasonyeo@nsrcc.com.sg

Kranji Sanctuary
Chan Lee Hock
leehock@nsrcc.com.sg

Facilities
David Ho
david@nsrcc.com.sg

Finance
Joanne Tan
joanne@nsrcc.com.sg

HR & Training
Joey Leau
joey@nsrcc.com.sg

FINANCE
finance@nsrcc.com.sg

Officer (Credit)
Quik Lian Chuan
(Payment & Statement of
Accounts Enquiries)

MEMBERSHIP
membership@nsrcc.com.sg

Senior Executive (Membership)
Tan Ei Kheng 6540 8552

CSO Membership
Faezah 6540 8556
Norazuana 6540 8555

Corporate Communication
corpcomms@nsrcc.com.sg

Officers (Corporate Comm)
Ivy Ho 6540 8557
Nurazura 6543 5732

GOLF
golfing@nsrcc.com.sg

Senior Executive (Golf)
Derrick Tay 6540 8546

Executives (Golf)
Jammy Chang 6540 8547
Ong Eng Peng 6540 8544

Asst Executive (Golf)
May Lim 6540 8545

Supervisor
(Driving Range)
David Oliveira 6543 1726

SPORTS/RECREATION
sports&recreation
@nsrcc.com.sg

Executive (S&R)
Mark Ong 6543 5737

Senior Officer (S&R)
Juhaini Masra 6540 8564

Asst Officer (S&R)
Ernawaty 6540 8563

RESORT BOWL @ NSRCC
bowlingstaff@nsrcc.com.sg

Executive (Resort)
Dennis Chew 6540 8567

CORPORATE/PRIVATE EVENTS
events@nsrcc.com.sg

Executive (Event Management & Jackpot)
Yam Chung Wai 6540 8566

Executive (Event Management)
Patrick Soong 6543 5735

Executive (Business Development)
Hanz Lim 6543 5082

Executive (Marketing)
Alix Chu 6543 5733

KRANJI SANCTUARY
kranji@nsrcc.com.sg

Executive (Golf)
Henry Thang 6795 2310



Editor Tan Sze Wah

theeditorspeaks

Dear members,

We are excited to bring you our first edition of RV newsletter 2014. It is the time for us to make New Year Resolutions and do some Spring Cleaning.

Here at NSRCC, we have been getting ready for the New Year during the holiday break. If you are an Instagram addict who enjoys taking photos or videos, you will be pleased to know that NSRCC is now on Instagram. Follow us on our Instagram page! @NSRCC.

Simply upload and hashtag your photos depicting a selected theme in our Mini Instagram Contest and you will stand a chance to win prizes. Themes and winners will be announced in every issue of RV and we look forward to receiving your submissions! Flip to page 9 for more details.

We also browsed through our large photo library for the top 10 magical moments of 2013. Find out which photos made the cut on pages 10 and 11.

In Golf 101, we discuss about unplayable ball and how to deal with it.

Find out who emerged as the 6th HSBC Youth Golf Challenge Champion on page 16.

We have a variety of events lined up for the March school holidays. Take the opportunity to pick up a new skill such as baking or basic bicycle maintenance. Our Vocal Class 2014 2nd intake is also open for registration for aspiring singers who wish to hone their singing skills.

I wish all our Chinese readers a Happy Lunar New Year. May you be blessed with abundance of love, joy and good health and have a great start to 2014.



Recap of 2013 Snooker Bi-Monthly Medal

Here is a look at the winners of the Snooker Bi-monthly Medal season 2013. Champion and 1st Runner-up Randy Lam and Roger Chan will represent the club for the National Snooker League season 2013/2014.

We wish them all the best!

2013 Results:

Grand Final (October)	Randy Lam (Winner) Roger Chan (1st Runner-up)
Mini-Tournament (August)	Randy Lam (Winner) Alan Tan (1st Runner-up)
Mini-Tournament (June)	Randy Lam (Winner) Lloyd Lam (1st Runner-up)
Mini-Tournament (April)	William Tay (Winner) Victor Ong (1st Runner-up)
Mini-Tournament (February)	William Tay (Winner) Alan Tan (1st Runner-up)



L-R Roger Chan and Randy Lam



The voices of NSRCC

The Voices of NSRCC

In the finals of the Mini-Karaoke contest held on 7 October, it was all about the voice and talent as five vocal class students battled it out for the title of singing superstar.

It was a unanimous decision by all three judges to pronounce Gwendolen Lim as the winner of the singing contest.

Congratulations to all our singers.

Results:

Winner	Gwendolen Lim
1st Runner-up	Ezann Ng
2nd Runner-up	Simon Tan
Consolation	Angel Lim and Cliff Tay
Best Showmanship	Simon Tan
Best Diction	Angel Lim
Best Timing	Cliff Tay



L-R Gwendolen Lim, Ezann Ng and Mr Rahim

Awesome Acts of Honesty

Landscape Contractor Returns Lost Stash of Cash #1

What would you do if you stumbled upon a pouch containing a large amount of cash?

Lakshmanan Veerappan, a landscape contractor from 'A Team Landscape Constructor Pte Ltd' never even thought about keeping the money.

He picked up the pouch at Air Force hole 7 on 25 October while carrying out his maintenance work around 2pm, and immediately handed it over to the Assistant Course Superintendent.

Subsequently the pouch was returned to its rightful owner.

"I have had many working experiences with him. He is a hardworking and upright man who truly deserves a commendation," said Assistant Course Superintendent, Lim Kah Hwee.



Lakshmanan (left) receives recognition from NSRCC's General Manager, Ng Heng Chew

\$16,000 Watch Found and Returned to its Owner #2

It was a rainy day on 15 October around 4pm and the golfer had kept his Rolex Submariner watch in his pocket away from the rain. After the game, he realised that his watch had gone missing.

Chief Marshall Phay Quan Theo drove him around the golf course to locate his watch but due to the difficulty of searching in the dark, the watch could not be found.

The golfer was finally reunited with his watch when Chief Marshall Phay Quan Theo and Marshall Dino contacted him the next morning when they found his watch near Air Force hole 4.

Jason Yeo, Manager (Golf) Changi had praise for both Marshalls, "Dino and Chief Marshall Phay showed integrity and did the right thing and delivered exemplary service standards."

Kudos to these do-gooders!

All three men were given recognition by NSRCC for their good deeds.



Chief Marshall
Phay Quan Theo



Marshall Dino

What amazing acts have you experienced/witnessed at NSRCC? Write in to us at corpcomms@nsrcc.com.sg.

Annual Bowling Championship 2013

A total of 32 enthusiastic bowlers completed a 12 game series at the Annual Bowling Championship on 24 November at Resort Bowl.

Derek Chan claimed the Men's title with 2820 pinfalls, improving his last year's scoring by 268 pins.

In the Ladies category, Isabelle Lee won with a total 2395 pinfalls and by just two pins ahead of opponent Tay Hui Wen. Wow, what a close call!

Shawn Choo emerged as the Youth Champion with a total of 2454 pinfalls.



Men's Category Champion,
Derek Chan with Francis Chan



Ladies Category Champion,
Isabelle Lee



Youth Category Champion,
Shawn Choo

Lucky Winners of the Membership Survey Draw Announced

It was good news for three members who participated in NSRCC's annual membership survey which was held from 25 October to 13 November 2013. They were selected by random drawing from over 1000 eligible entries.

1st Prize

iPad mini 32GB with 3G

2nd Prize

\$300 Takashimaya Voucher

3rd Prize

\$150 Takashimaya Voucher

Overall satisfaction remains unchanged from last year at 88%.

NSRCC would like to thank all members who took time to respond to the survey. The results will provide a better understanding of what members want and the management will consider your responses and comments carefully.

Congratulations to our winners!



Take Five with Bowling Coach Benjamin Hong

So much has been said about Benjamin since NSRCC's Youth Bowlers won the 14th Youth Inter-Club Mixed Bowling League 2013.

We discussed his coaching background and what we can look forward to in the coming season.



RV: Share with us your role as NSRCC bowling coach?

Ben: My duty is firstly to develop the team's physical skills during our weekly training on Sundays. I will observe each bowler's skills and techniques required for competition, set sparing as main priority and ensure they spare at a decent level, that is make 6-7 shots out of 10 around the specific areas.

Another aspect requires me to be at the competition to see how the bowlers are adapting to lane changes and help them make necessary ball and angle adjustments.

RV: How do you go about becoming a qualified bowling coach?

Ben: I took on a theoretical coaching course from the Singapore Bowling Federation. My teacher, Danny Koh taught me what I should be doing on the lane and I also received tips from Henry Tan and Mervin Foo, technical director and head coach of Singapore, respectively. With that, I could apply my skills to teach the youths.

RV: Is there one player in the team who you most enjoy coaching and why?

Ben: I would say Tay Hui Wen. We have developed a common understanding and I have seen her progress from the first

time I saw her. She tries out my coaching methods and it works for her.

I am very happy when I coach the team on what they need to do and they succeed. That is the most satisfying aspect of being a coach!

Team wise, they are very nice, they give me respect, believe in me and listen to me during competition when stress levels are high.

RV: What do you think you did was significant in your coaching that led to the team winning?

Ben: The most important factor was the physical training. The team puts in effort, I made some decisions and the team executed shots as we beat our opponents by a slight margin and made a difference in the whole game.

RV: And, lastly what would be your New Year's resolution for the team for 2014?

Ben: For the team, definitely we want to win the 14th Inter-Club Youth Mixed Bowling League again which has always been our goal. Personally, I want to win the Adult and the Youth Inter-Club competitions.

17

The number of years he has been bowling

10

Number of perfect games scored

9

Number of countries he has been to for bowling competitions

2

Perfect games played and Years in coaching

Interview has been edited for clarity and brevity.

CNY Operation Hours

During the Chinese New Year Period, the club will be operating under the following hours.
The Management and Staff of NSRCC wish all an enjoyable holiday break ahead!

Facilities		CNY Eve 30 Jan, Thu	CNY Day 1 31 Jan, Fri	CNY Day 2 1 Feb, Sat
Golfing	Changi Golf Courses (27-hole)	6.45am – 3.00pm	Closed	Normal Hours
	KSGC Golf Courses (18-hole)	6.45am – 3.00pm	Closed	Normal Hours
	Driving Range (Changi)	6.45am – 3.00pm	Closed	Normal Hours
	Executive Par 3	6.45am – 3.00pm	Closed	Normal Hours
General	Main Lobby	8.00am - 3.00pm	Normal Hours	Normal Hours
Membership	Membership Centre	8.30am – 3.00pm	Closed	10.30am - 2.30pm
Food & Beverages (F&B)	Jumbo Seafood (Changi)	Normal Hours	6.00pm – 10.00pm	Normal Hours
	The Deck – Golfers' Terrace (Changi)	6.45am – 2.00pm	6.45am – 2.00pm	Normal Hours
	Champion Sports Lounge (Changi)	Closed	Closed	Normal Hours
	MoMo Hut - Pool Side Café (Changi)	Closed	Closed	Normal Hours
	The Terrace Cafe (KSGC)	7.00am – 2.00pm	7.00am – 2.00pm	Normal Hours
	Bowling Cafe – Appetizer (Changi)	12.00pm - 3.00am	10.00am – 2.00am	10.00am – 2.00am
	Gurame (Sea Sports Centre)	Normal Hours	Normal Hours	Normal Hours
	STELLA (Sea Sports Centre)	Normal Hours	Normal Hours	Normal Hours
Sports & Recreation (S&R)	Resort Bowl	12.00pm – 3.00am	10.00am – 2.00am	10.00am – 2.00am
	Fruit Machine Room	9.30am - 3.00pm	3.00pm – 1.00am	Normal Hours
	Video Games Room (Funzone)	12.00pm – 3.00am	10.00am - 2.00am	10.00am - 2.00am
	Swimming Pool	8.00am – 9.00pm	8.00am – 9.00pm	8.00am – 9.00pm
	Eastern Pro Shop (Bowling Centre)	2.00pm – 6.00pm	Closed	Closed
	Bungalow Reception	9.00am – 3.00pm	Normal Hours	Normal Hours
	Constant Wind (Sea Sports Centre)	Normal Hours	Closed	Normal Hours
	Centre for Performance Technology (CPT)	Normal Hours	Closed	Normal Hours
	All other S&R facilities	8.00am - 3.00pm	Normal Hours	Normal Hours



NSRCC Mini Instagram Contest 2014

We are launching a Mini Instagram Contest 2014.

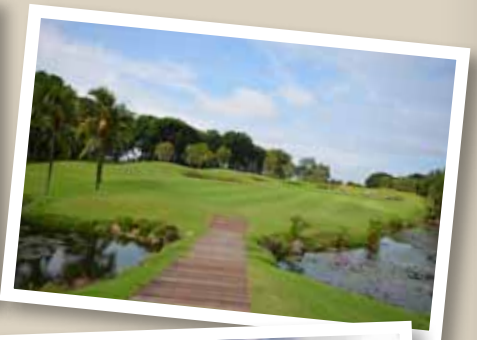
This 1st contest theme winner will receive a NSRCC Travel Adaptor.

The photo garnering the most 'likes' on Instagram will be declared the winner.

All entries must be yours and marked with TWO hashtags.

The first is @NSRCC and the second is #nsrccfavspot.

Closing date:
10 February 2014



Share with us your favourite spot in NSRCC!
Remember to tag **@NSRCC** and **#nsrccfavspot**

Magical Moments in 2013

Resort View relives a year jam-packed with triumph, beauty, elation, compassion, glory and togetherness. So sit back and enjoy.



President's Trophy, 2 February 2013

For the first time, 10 junior golfers from the professional, national and development teams were honoured for their achievements in local, regional and international tournaments in 2012



Opening of Champion Sports Lounge, March 2013

A sports-themed lounge packed with golf, football, pool and electronics darts is a great place to chill out with friends and families



National Service Day Golf, 24 August 2013

A strong "Gotong Royong" spirit of the game of golf

Open House, 30 August 2013

It was a weekend of fun, activities, food and great promotions at NSRCC's Open House and an experience for first-timers to owning a golf club membership





Charity Golf, 19 May 2013

Sponsors and volunteers helped raise \$358,000 despite challenging times through a two-day friendly golf competition and first live auction for the elderly



Kranji Countryside Run, 11 August 2013

Kranji Sanctuary Golf Course played host to the first Kranji Country Side Run 2013 giving more than 1,600 participants an opportunity to experience the lush greenery and serenity



14th Youth Inter-Club Bowling Mixed League, 31 August 2013

Our Youth bowlers rose to the occasion and captured the 14th Youth Inter-Club Bowling Mixed League Champion title for the third time



NSRCC Junior Open Championship, 9 – 12 September 2013

Close to 50 youths participated in the NSRCC Junior Open Championship after a two-year hiatus



Singapore Golf Association (SGA) Inter-Club League, 19 September 2013

NSRCC League Team scored their third consecutive Overall Championship title and won the 'B' Division title in the SGA Inter-Club League 2013

Embracing the Year of the Wood Horse 2014

It is another Chinese New Year on the horizon! Year 2014 is ruled by the most dynamic Chinese zodiac sign: Horse. So what will this year bring for us? Let us see it from a Chinese metaphysic perspective.

Not many people know that the actual change of energy falls on 4 February 2014, instead of the commonly celebrated Chinese Lunar New Year. Why is this so? In the past, Chinese emperors and their scholars relied much of their decision making based on astronomy and astrology, using the Chinese solar calendar. However the royals did not want the laymen to know about this too, thus the lunar calendar was invented only to let commoners know when to harvest and do other farming activities.

This calendar is what is commonly used until now by the Chinese for everyday activities. However, Feng Shui consultants use the solar or Hsia calendar for reference and forecasting purposes. For those hoping to get sons and daughters born in the Horse year, you may need to wait until the 'official' time: 4th of February 2014.

What will 2014 be like? It is a Wood Horse year. The Wood element is of yang nature, symbolised by a tree in Chinese metaphysics. It stands upright and rigid, constantly thriving to grow taller and wider. 2014 will be a year of growth in many industries, after several setbacks from the previous years.

Those born in the year of the Horse are usually dynamic, energetic, and outgoing. Horse is also the element of Fire and together with Wood element will form a harmonious relationship for 2014. All in all, we can expect a relatively calmer year with a more positive outlook.

Take note though, it does not mean that all will be smooth sailing throughout. Yang Wood's character is very straight and stubborn, whereby the Horse is very free spirited. There will still be conflicting policies from different country leaders, lawmakers and market players; between the conservatives and liberals.

Horse in Chinese metaphysics is one of the Flower of Romance, thus be careful of romance related scandals. Otherwise, 2014 will be a good year to tie knots for those who have been planning to.



As the year will be ruled by Wood and Fire elements, stock markets, hospitality/entertainment business and property will fare better, while Metal and Water element related business such as logistics, transportation, banking and finance may suffer some setbacks. Although the market outlook is somehow more optimistic, do not be impulsive in your investment schemes. It is the nature of a Horse year to be unpredictable.

What about individual luck? Each of us will face different circumstances this year. There are many forecasts based on the year of birth, but these are actually quite superficial.

In proper Chinese metaphysics studies, calculating our luck or biorhythm will take into account the month, day and time of birth. Therefore when people say that your animal zodiac sign will 'clash' with the Horse, do not be worried (and this year, the 'lucky' ones are those born in the Rat year). Clash is not always bad; it may only mean you undergo significant changes for this year which could be for the better.

We also have other signs that are 'friends' with the horse. Those born in the year of goat enjoy best relationship with horse. Tigers and dogs are also horse's good friends; they bode well together. Therefore for those animal signs, this year will be relatively smooth and harmonious, although it will also depend on the month, day and hour you are born.

Instead of focusing on personal luck, we can spend our energy on tangible things that we can do to improve our living and working space in order to have a better and productive year in 2014. Below are some tips to apply to improve your house and office harmony in this Horse year:

1. Spring cleaning and de-cluttering

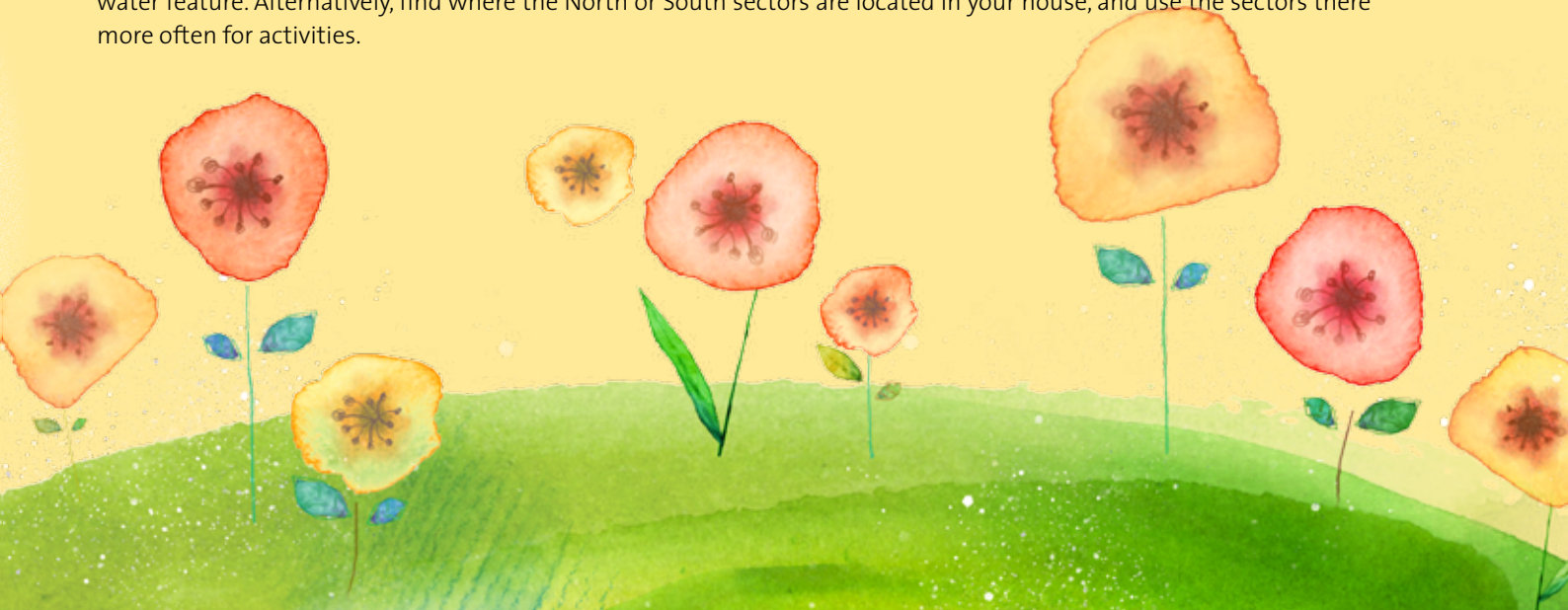
As cliché as it may seem, do not underestimate the power of spring cleaning! In Feng Shui, our house is like an extension of our bodies. You would want to clean every inch of your place properly at least once a year, to avoid energy blockages, ease circulation and start fresh for the next year.

Use this opportunity to clean your cupboards that have been tightly closed for sometimes, re-organise your files and books, and donate or throw away unused/ broken items. Clean and bright space is very important starting point to generate good energy.

2. Activate South and North sectors for prosperity

Every year will bring auspicious energy from different directions. This year, those who have houses facing South or North, or those who sit facing South/ North in their workspace will enjoy better energy. If your main door is facing these directions, ensure it is clean and bright without any obstructing items in front of it such as laundry poles, clutters of footwear or dead plants.

Clean up your working desk especially on these sectors, and you may display some moving items such as small fan or water feature. Alternatively, find where the North or South sectors are located in your house, and use the sectors there more often for activities.



3. Northwest and East are the inauspicious sectors

This year, these two directions are the ones you need to be careful of. If your main door or main bedroom is located in this sectors or facing here, put some metal decorations such as hanging metal wind chimes with six rods, or a clock with metal pendulums to help neutralise the inauspicious energy. You can also find some strand of six ancient Chinese coins and hang them on the doorknob that can serve as decorative items.

On your desk facing these directions, displaying some small metal items will also help too. Remember to keep these areas clean and well circulated, especially when the East or Northwest sectors of your house are bathrooms or store rooms.

4. Northeast as quarrelsome sector

Be careful for those of you who sit at the north east area in your office, or for those with bedroom at this sector. The quarrelsome energy means you may be feeling agitated easily for no reasons, thus arguments with colleagues or spouses can easily arise. You can help harmonise the area by putting red-coloured decorations such as wall paintings or floor mats. Putting an additional lamp at this corner will also help.

5. Southwest for career enhancement, Centre for academic excellence

If you are looking to boost your career and nail those promotions, try to activate the southwest sector energy by placing a bowl of fresh water. This year, the Centre of your house is also the 'academic' sector, where you can try placing your child's study table to improve on their academic work.

These are some of the practical Feng Shui tips you can apply to enhance your house and office for the year 2014. As the principles of trinity in Chinese metaphysics states: harmony of "heaven-earth-man". Thus be in harmony with what the year brings you. Improve your house and office Feng Shui and strive in your endeavours, then prosperity and good luck will come your way.

Happy Lunar New Year!

About the Contributor

Vincent Koh and the Singapore Feng Shui Centre continue to fulfill their mission to share their knowledge and train professional practitioners worldwide. Members who are interested in learning more about Feng Shui and Chinese Metaphysics can visit www.fengshui.com.sg or email to singfc@fengshui.com.sg.



NSRCC Charity Golf 2014

17 & 18 MAY 2014



**SAFRA Resort Golf Course,
10 Changi Coast Walk
Kranji Sanctuary Golf Course,
50 Neo Tiew Lane 3**

Guest of Honour
LG Ng Chee Meng
Chief of Defence Force

Meet Singapore's Rising Golf Stars Competing at HSBC Youth Golf Challenge

The third and final leg of the 6th HSBC Youth Golf Challenge 2013 hosted by NSRCC showcased 53 finalists in a thrilling climax as they battled out for the Championship title from 2-4 December at Kranji Sanctuary Golf Course.

Despite rain interruption, the youths' competitive drive shone through and they earned the invaluable experience of taking part in a junior golf competition that will leave an indelible mark should they one day take the professional leap.

Amanda Tan who emerged as Champion of the 'B' Division Girls and Overall Champion will be competing in the 2014 HSBC China Junior Golf Open held in Zhuhai, China.

"I would like to thank my family and friends for their continuous support. It was a good experience to play with regional players," she said.

Congratulations to all winners!



Parents of the junior golfers lending their support rain or shine



Loosening up before tee-off



L – R Ashley Loh Leanne, Amanda Tan and Jacqueline Young



L – R Tommy Tan, Louis Lee and Desmond Kim



Winners standing tall and proud with their well-deserved trophies!



Maisarah Bte Saadon (right) from Raffles Country Club scores a Hole-in-one



Amanda's prize for winning the HSBC Youth Golf Challenge 2013

NSRCC Inclement Weather Policy

Inclement weather refers to excessive rainfall, lightning, with or without the presence of rain, as well as haze.

In the following course conditions, golfers may choose to exercise the following options based on your position of play at the point of interruption.

CAT 1- Thunder/Lightning



AM Session

- 1) Rain check if golfer is unable to cross over to 2nd nine tee-off before 1145hrs;
- 2) Allow golfer to change to 9-hole game; or
- 3) Golfer must leave the course at 1415hrs if unable to complete 18 holes before time allotted, if mini shotgun is initiated for afternoon flights.

PM Session

- 1) Rain check if golfer is unable to cross over to 2nd nine tee-off before 1645hrs;
- 2) Allow golfer to change to 9-hole game; or
- 3) If mini shotgun is initiated for afternoon session, there shall be no issuance of Rain check once golfer tees off.

Heavy Rainfall



4mm & above in 10 minutes:

- 1) Rain check; or
- 2) Allow golfer to change to 9-hole game.

Haze



24-hr reading Above 200psi:

- 1) Rain check; or
- 2) Allow golfer to change to 9-hole game.

3-hr reading Above 300psi:

- 1) Play suspended and issue Rain check

3-hr reading Between 200-300psi:

- 1) Play at your own risk

Executives/Duty Marshals contact numbers can be found on every buggy in the event you need assistance.

Should you have any feedback, please contact the Golfing Department at 6540 8500, from 9.00am to 6.00pm on weekdays or email us at golfing@nsrcc.com.sg.



10 Hardest Shots in Golf by Phil Brew

Don't try these at home folks! Golfers may squabble over the order and that's fine - I understand we all have our own battles with different shots in the game. You had better think twice before choosing to play these little beauties.

10. Slice off hanging lie, ball above feet

It just goes against the nature of the shot. Generally the ball will tend to pull hook off this lie so to intentionally slice the ball is a tough deal.

9. High hook

Again, hooking the ball usually goes low as the face needs to be closed, therefore de-lofted at impact to create such a shot. So to hit a high hook requires a great lie, preferably off a tee, otherwise this one could be a no goer.

8. Pitch off hardpan

It looks scarier than it really is but it does require some precision. Wedges tend to have more bounce than other clubs so that is a big part of the difficulty of the shot. Play the ball more back in the stance and really keep your head steady on this one.

7. Flop from tight lie

This shot is borderline stupid. It is one shot that should probably get a higher degree of difficulty assigned to it. To hit a high lofted shot off a really tight lie is no mean feat. Pull it off and you deserve high fives from everyone in your flight!

6. Driver off the deck

Twenty years ago, this shot wasn't as unusual as it is today. With bigger Driver club heads these days, larger volumes, all translate to advantages off the tee, but when the ball is on the ground, no tee, hitting the Driver with that deep face is also borderline crazy! The absolute precision required and the amount of speed you need to make it at all worthwhile compared to the alternative, a 3 wood, is the big reason most golfers will not try this one.

5. Punch cut

You're in the trees, you see a gap between the trees, but you need to keep it low, under the overhanging branches and then slice the ball towards the target. Pull this baby off and you will feel like you deserve a world ranking but the difficulty lies in that in order to slice the ball you need to open your clubface. When you open your clubface you add loft to your clubface, hitting the ball higher. Longer, less lofted clubs are easier to pull this one off. Short clubs, forget it.

4. High shot over trees from downhill lie

Hitting high over trees is hard enough but to add into the equation a downhill lie, just makes it plain nasty. Take plenty of loft, plenty and make sure you make solid contact. The consequences for not could be disastrous.

3. Embedded ball in sand to tight pin

You can get your ball out of buried lies from the sand but being clever and hitting it close is another thing. Especially if your pin is a tight pin, meaning a hole cut close to the edge of the green where you are coming from.

2. Hit through the window in the trees

This takes the ultimate in conviction. To know your ball flight so well in three dimensions, to be able to then choose the necessary club to hit through the only gap you can see out of the woods, a window through a tree - really requires some skill. If you struggle to find the courage to try this one, don't feel bad, you are normal.

1. 40-60m bunker shot, with water hazard behind green

Poll a thousand touring golf professionals and I think you will arrive at the same number one. This is a doozie! I've been a professional for 20 years and this shot still makes me scratch my head. You'll be the first to know once I have figured it out. So many ways to play it, that's the problem!



Golf 101



Rule 28 Ball Unplayable

A golfer can decide whether his ball is unplayable anywhere on the course other than in a water hazard. The golfer may proceed under **penalty of one stroke**:

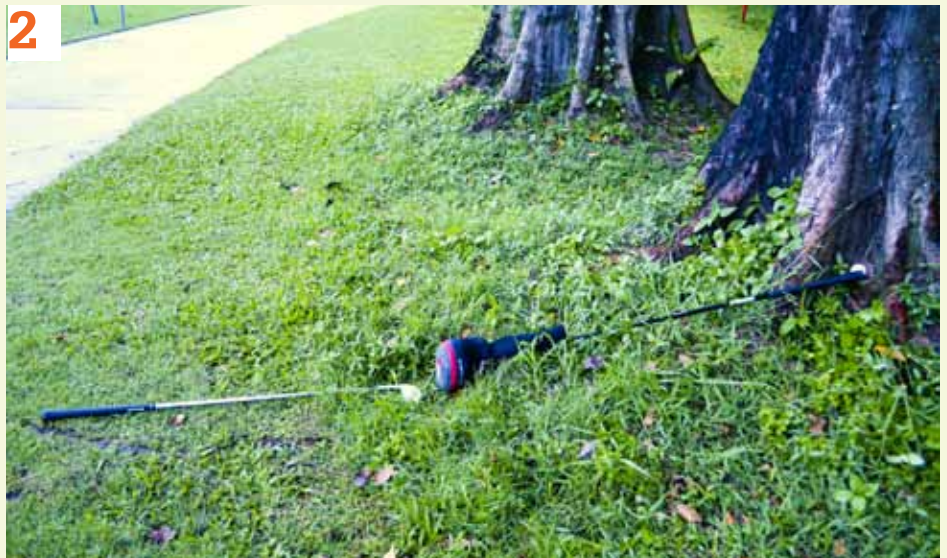
- Play a ball as close as possible from the spot which the original ball was last played.
- Drop a ball behind the point where the ball lay. The point where the ball is dropped must be in a straight line between the hole and the point where the ball lay.
- Drop a ball within two club-lengths of the spot where the ball lay, but not nearer to the hole.

What if your golf ball is stuck between the tree stump?

For example, golfer can take relief under 28(C):



1 Declare the ball unplayable



2 Mark out two club-lengths for ball drop



3 Drop a ball within two club-lengths but not nearer the hole



4 Drop the ball and continue play

Note: If the ball is in a bunker and the player decides to go with option B or C, the ball must be dropped in the bunker.

Hole-in-One Fun Facts



Fact #1

Did you know if you make a Hole-in-One at NSRCC you get to ring a Hole-in-One bell located at the Golfers' Terrace at both Changi and Kranji locations



Fact #2

Hole-in-One achievers with golfers' insurance have up to 14 days at NSRCC or 30 days at other local golf clubs to celebrate an aggregate sum of S\$500 at any of the clubs' F&B outlets up to two occasions

Fact #3

ARMY Hole 3 holds the most number of Hole-in-One achievers while NAVY Hole 6 holds the least

Fact #4

Mr Tan Poh Guan scored the most Hole-in-One feats in NSRCC, in 2006, 2008 and 2012

Fact #5

Dr Ng Eng Hen, Minister for Defence used a 4 Hybrid from 170m at ARMY hole 7 to score a Hole-in-One (right)

Winners Quotes

"The distance was 145m, I used my 9 iron since it was a downhill and could carry 125m. I hit a solid shot, the ball landed on the fringe and rolled into the hole."

– Cheng Keng Hui

"I don't know why I am ok on one day and play badly on another. But, I know I holed it after a few beers with a good friend. So, I guessed it must be the beer!"

– Fong Wait Kit



Recently scored a Hole-in-One at our golf courses?
Submit your interesting quote to us at corpcomms@nsrcc.com.sg.

L-R Tan Kah Han, Club Captain; Ng Heng Chew, General Manager, NSRCC and Dr Ng Eng Hen, Minister for Defence

Hole-In-One Achievers

S/N	Who	When	H'cap	Where
1	David Chan Sian Kheong	1 October	12.3	Warren Golf & Country Club Hole 14
2	Jack Lim Chai Hin	10 October	18	KSGC Hole 17
3	Sandy Chia Joong Luang	17 October	32	KSGC Hole 14
4	Fong Wai Kit	20 October	21	Navy Hole 3
5	Cheng Keng Hui	23 October	9.2	Airforce Hole 8
6	David Chan Sian Kheong	1 October	12.3	Warren Golf & Country Club Hole 14
7	Dr Ng Eng Hen	10 November	13.7	Army Hole 7
8	Winston Tan Fah Kiong	17 November	11.4	Airforce Hole 6
9	Sham Chee Keong	17 November	1.5	Lake Course Hole 7 Lakewood CC, Samutprakarn Thailand
10	Gurinder Singh Ahluwalia	24 November	16	KSGC Hole 5

For results of Monthly Medal, please go to <http://www.nsrcc.com.sg/posting/golf>

BRING YOUR CLUBS IN & WE PAY CASH FOR IT *

Creative Golf is the largest and established used-club shop in Singapore. We have buyers waiting to buy your clubs.

It is that simple

*Terms and Conditions Apply



333, Kreta Ayer Road,
#01-17, Singapore 080333

(65) 9633 9086
www.creativegolf.net



Hokkaido Cake Baking Class



**8 March, Saturday
2.00pm - 4.00pm**

**Fees: \$100 (Member) / \$120 (Guest)
Age Group: 16 years onwards
Register by: 16 February, Sunday*

Learn to bake the irresistibly delicious Hokkaido cake with custard cream, well known for its soft, airy and fluffy texture.

Contact Waty at 6540 8563 or email ernawaty@nsrcc.com.sg

**Fees are subject to 7% GST. Class starts with a minimum of 10 participants.*

FLEA MARKET

Weekend Flea Market

**15 March - 16 March
(Saturday - Sunday)
1.00pm - 7.00pm**

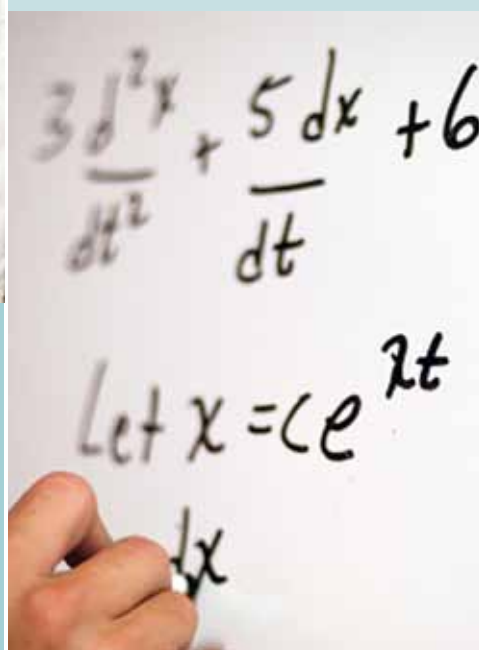
**Fees (Per Day): \$30 (Member)
/ \$45 (Guest)
Register by: 21 February, Friday*

Looking for something to do during the March weekend? Why not rent a booth to sell your pre-loved, second-hand or handmade items. Grab your booth soon to avoid disappointment.

Contact Waty at 6540 8563 or email ernawaty@nsrcc.com.sg

**Fees are subject to 7% GST. Programme starts with a minimum of 10 registrations.*

Problem Solving Workshop



**17 - 18 March
(Monday - Tuesday)
2.00pm - 4.00pm**

**Fees: \$80 (Member) / \$95 (Guest)
Age Group: 4 - 12 years old
Register by: 23 February, Sunday*

Lego bricks are known to help a child develop fine motor skills and creative problem-solving skills. Come together for two days of building fun and stand a chance to win attractive lucky draw prizes.

Contact Waty at 6540 8563 or email ernawaty@nsrcc.com.sg

**Fees are subject to 7% GST. Programme starts with a minimum of 20 participants.*

Vocal Class 2nd Intake



**17 March - 5 May
(Every Monday)
6.30pm - 8.00pm**

**Fees: \$180 (Member) / \$200 (Guest)
Age Group: 16 years and above
Register by: 2 March, Sunday*

The 2nd intake of Vocal Class for 2014 is now open for registration. Brush up on your singing skills by learning the correct singing techniques with a chance to take part in our Mini-Karaoke Contest.

Contact Waty at 6540 8563 or email ernawaty@nsrcc.com.sg

**Fees are subject to 7% GST. Class starts with a minimum of 10 participants.*



Bicycle Maintenance by Park Tool School

*Age Group: 16 years and above
Register by: 9 February, Sunday*

Bike maintenance is a wide ranging topic so we'll start with the basics. Learn more about the dos and don'ts before you start riding your bicycle. Acquire the skills to fix your bicycle with the use of just a few simple tools.

Beginner

*1 March (Saturday) 8.00am - 12.00pm
\$60 (Member)/ \$75 (Guest)*

- For someone with a brand new bike and wishes to learn about basic maintenance.
- Learn tyre & tube service, brake service, gear adjustment and rectify problems.
- Techniques of cleaning the bike.

Intermediate

*1 March (Saturday) 1.00pm - 7.00pm
\$90 (Member)/ \$110 (Guest)
(Light refreshment will be provided)*

- For someone who is familiar with the parts of the bicycle and is able to recognise minor problems.
- Learn and practise doing minor repair works.

Advanced

*2 March (Sunday) 9.00am - 7.00pm
\$130 (Member)/ \$155 (Guest)
(Lunch & light refreshments will be provided)*

- For someone who has been doing minor repairs for family and friends and would like to know more details.
- Learn to overhaul the bicycle. Troubleshooting will be part of the course.

Contact Waty at 6540 8563 or email ernawaty@nsrcc.com.sg

**Fees are subject to 7% GST. Each course starts with a minimum of 12 participants. Student may bring personal bike to get useful tips. Course materials will be provided. Park Tool School books, tools, lube and other bikes accessories will be on offer.*

Snooker Kakis 2014



1 January - 31 December

**Fee: \$120 (Member)
Age Group: 16 years and above*

Love the game of snooker and looking to improve your skills? Come down with your family and friends to play and train with like-minded snooker kakis.

Enjoy a snooker game for as low as \$2.50 per hour. This one-time fee entitles you to 48 hours of snooker which is valid till 31 December 2014.

Contact Waty at 6540 8563 or email ernawaty@nsrcc.com.sg

**Fees are subject to 7% GST. Maximum number of hours per booking is 3 hours. Maximum 2 sign-in guests. Not applicable on Public Holidays, Member's night and tournament days. Advance booking is advised.*

Affiliated Clubs

Dear Members,

Please produce your Letter of Introduction, and Handicap Cards to qualify for the discounted/ reciprocal rates. The host club will charge walk-in rates otherwise. You may print your letter of Introduction on our club website at www.nsrcc.com.sg using your members' PIN. Please check our website for the latest/ current list of affiliated clubs.

malaysia

Johor **Tanjong Putei Golf & Country Club**
Tel : 02-07-271 1888 (Office & Club)
6338 2828 / 6339 7266
(S'pore Office)
Fax : 02-07-271 1333 (Office & Club)
6339 5128 (S'pore Office)
Email : enquiry@tpgr.com
Website : www.tpgr.com

Malacca **A'Famosa Golf Resort Berhad**
Tel : 02-06-552 0888 / 0555
Fax : 02-06-552 0695
Website : www.afamosa.com
Email : enquiries@afamosa.com

Orna Golf & Country Club
Tel : 02-06-521 0333
Fax : 02-06-521 0222
Email : ogcc@ornaresort.com.my

Negeri Sembilan **Nilai Springs Golf & Country Club**
Tel : 02-06-850 8888
Fax : 02-06-850 3388 (Golf)
02-06-850 3005 (Admin)
Email : club@nilaisprings.com.my

Staffield Country Resort
Tel : 02-03-8766 6117 / 8 / 9
Fax : 02-03-8766 7173
Email : scrb@streamyx.com

Penang **Penang Golf Club**
Tel : 02-04-644 2255
Fax : 02-04-644 9345
Website : www.penanggolfclub.com.my

Bukit Jawi Golf Resort
Tel : 02-04-582 0759
Fax : 02-04-582 2613
Email : enquiry@bukitjawi.com.my
Website : www.bukitjawi.com.my

Penang Golf Resort
Tel : 02-04-578 2022
Fax : 02-04-575 0228
Email : pgrb@hotmail.com

Perak **Clearwater Sanctuary Golf Resort**
Tel: 02-05-366 7433
Fax: 02-05-366 7434
Email : cwsgolf@po.jaring.my
Website : www.cwsgolf.com.my

Selangor **Kelab Golf Sultan Abdul Aziz Shah**
Tel: 02-03-5510 5872
Fax: 02-03-5510 5860
Website : www.kgsaas.com.sg

indonesia

Batam **SouthLinks Country Club**
Tel : 62 778 323837 (Batam)
62 21 3190 2070 (Jakarta)
6278 7079 (S'pore Office)
Fax : 62 778 323849 (Batam)
62 21 3190 2772 (Jakarta)
6270 0029 (S'pore)
Email : sales@southlinksgolf.com

Jakarta **Padang Golf Modern & Country Club**
Tel : 62-21-552 9228
Fax : 62-21-552 9177 / 87
Website : www.moderngolfcc.com

Sedana Golf & Country Club
Tel : 62-267-644 730 (Club)
62-267-644 733 (Golf Reservation)
62-21-612 8811 (Accommodation)
Fax : 62-267-644 728 (Club & Golf Reservation)
62-21-612 8822 (Accommodation)
Email : sedanagolf@yahoo.com

china

Guangzhou **Guangzhou International Golf Club**
Tel : 001-8620-8293 3888
Fax : 001-8620-8293 3168
Email : golf@gigc.com.cn
Website : www.gigc.com.cn

Zhuhai **Lakewood Golf Club**
Tel : 086-756-338 3666 / 0452 (Club)
852-2877-1215 / 1128 (Golf Reservation)
Fax : 086-756-338 3898 / 086-756-339 9706 (Club)
867-5633 0452 (Hong Kong Office Golf Booking)
852-2877 8770 (Golf Reservation)
Email : reservation@lakewood.com.cn
Website : www.lakewoodclub.com.cn

brunei

Royal Brunei Golf & Country Club
Tel : 673-2-611 582
Fax : 673-2-610 499
Email : rbgcc@jerudong-park.com
Website : www.jerudong-park.com

special golfing arrangements

Members need not apply for an Affiliation Card. Just present your Membership & Handicap Cards.

Singapore
Sembawang Country Club, Singapore
Tel: 6751 0320 / 328
Fax: 6752 0446
Website: www.sembawanggolf.org.sg
Flights Available: Weekdays only

Thailand
Phuket Country Club
Tel: 660 76 3192004
Fax: 660 76 319206
Website: www.phuketcountryclub.com
Email: bookings@phuketcountryclub.com

Gassan Khuntan Golf & Resort
Gassan Lake City Golf & Resort
Gassan Marina Golf Club
Website: www.gassangolf.com

South Africa
Spier Country Club, Cape Town
Tel: 27-21809-1100
Fax: 27-21881-3634
Website: www.spier.co.za
Email: info@spier.co.za

Vodacom, World of Golf, Johannesburg
Tel: 27-11802-5864
Fax: 27-11802-7491
Website: www.golfersworld.co.za
Email: rica@worldofgolf.co.za



facilitiesdirectory

main lobby reception

Tel: 6542 8288
6543 5725 (booking of facilities)
8 am to 8 pm (daily)

membership centre

Tel: 6540 8555/8556
8.30 am to 5.30 pm (Mon to Fri)
10.30 am to 2.30 pm
(Weekends & Public Holidays)

f&b outlets

appetizer (at bowling centre)

12 pm to 11 pm (Mon to Thu)
12 pm to 2 am (Fri, Sat & eve of Public Holidays)
10 am to 11 pm (Sun & Public Holidays)

champion sports lounge

Tel: 6542 4688
email: enquiry@championbar.com.sg
12 pm to 12 am (Sun to Thu)
12 pm to 1 am (Fri, Sat & eve of Public Holidays)

jumbo seafood @ nsrcc

Tel: 6552 3435
11.30 am to 3 pm (lunch daily)
6 pm to 10.30 pm (dinner daily)

the deck (golfers' terrace)

Tel: 6214 3136
6.45 am to 7.30 pm

momo hut (poolside cafe)

Tel: 6542 4688
3pm to 11pm (Sun to Thu)
3pm to 12am (Fri, Sat & eve of Public Holidays)

the terrace cafe (kranji sanctuary)

Tel: 6791 1948
7 am to 8 pm (daily)

corporate/private events

the falcon, the corvette, the larden, oriole 1 and oriole 2, the leaders

For booking enquiries, call 6540 8566 /
6543 5735 / 6543 5749
email: events@nsrcc.com.sg

For bookings of The Sanctuary I & II at KSGC
and F&B catering, call 6795 2300 for
reservations and enquires.

golf facilities

golf reception

Tel: 6540 8500
Fax: 6542 7710 / 6545 6525
Opening Hours: 7 am to 5.30 pm
Booking Hours:
Weekend Golf
(following weekend and public holidays)
In-person* - 6 pm to 7 pm (Fri)
Internet - 6 pm onwards (Fri)
Telephone - 9.30 am to 5 pm
(Sat onwards)

* currently not available at Kranji Sanctuary Golf Course

Weekday Golf

In-person, Telephone - 9.30 am to 5 pm (daily)
Internet - 9.30 am onwards (from Mon)

driving range

Tel: 6543 1726
7 am to 11 pm (daily, except Mon: 2pm to 11 pm)

phil brew golf academy

Tel: 6545 1601

golf pro-shops

nsrcc - Pan-West

Tel: 6542 0878
7 am to 7 pm
(daily, except Mon: 11 am to 7 pm)

sports & social facilities

billiards room

10 am to 10 pm
(daily, but extendable to 11 pm upon request)

fitness centre

Tel: 6543 5715
7 am to 9.30 pm (Weekdays)
7 am to 8.30 pm (Weekends & Public Holidays)

jackpot room

9.30 am to 12 am (Mon to Thu)
12 pm to 1 am (Fri)
9.30 am to 2 am (Sat)
9.30 am to 12 am (Sun & Public Holidays)
9.30 am to 1 am (eve of Public Holidays)

funzone (video games arcade and pool)

12 pm to 10 pm
(Mon to Thu, Sun & Public Holidays)
12 pm to 11 pm
(Fri, Sat & eve of Public Holidays)

karaoke

Tel: 6545 6365
12 pm to 11 pm (Mon to Thu, Sun & Public
Holidays)
12 pm to 2 am (Fri, Sat & eve of Public Holidays)

kidz corner (indoor playroom)

8 am to 10 pm (daily)

kindergolf

Tel: 6214 0581
9 am to 6 pm (Mon to Sun)

resort bowl @ nsrcc

Tel: 6545 6365 / 6545 2059
12 pm to 11 pm (Mon to Thu)
12 pm to 2 am
(Fri, Sat & eve of Public Holidays)
10 am to 11 pm (Sun & Public Holidays)

resort bowl @ nsrcc - eastern pro-shop

2 pm to 10 pm (Tue to Thu, Sun & Public
Holidays)
2 pm to 11 pm (Fri, Sat & Eve of Public Holidays)
Closed on Monday

squash court

10 am to 10 pm (daily)

swimming pool & wet playground

8 am to 9 pm (Tue to Sun)
12 pm to 9 pm (Mon)*
* 8 am to 12 pm are pool cleaning hours

tennis courts

7 am to 10 pm (daily)

bungalow reception

Tel: 6542 2036
Fax: 6545 6544
Opening Hours: 9 am to 8 pm (daily)
Booking Hours: 9 am to 7 pm (daily)

Six-month advance bookings are open on a
rolling basis. Members can make bookings via
phone, in-person or via the Internet at our
website www.nsrcc.com.sg.
Check-in: 2 pm to 7 pm
Check-out: 9 am to 10 am

others

sparks & shines car grooming services

nsrcc
Tel: 6285 5655
7 am to 7 pm (Tue to Sun)
Closed on Monday & Public Holidays

sea sports centre

constant wind sea sports centre & pro shop

Tel: 6445 5108
10 am to 7 pm (daily)

centre for performance transformation

Tel: 6214 9412

belly view cafe

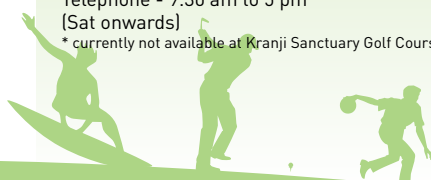
11 am - 10 pm (Tue to Sun & Public Holidays)
Closed on Monday

stella

Tel: 6214 9168
12 pm to 10.30 pm (Mon to Thu)
12 pm to 12 am (Fri & eve of Public Holidays)
9 am to 12 am (Sat)
9 am to 10.30 pm (Sun & Public Holidays)

gurame indonesian restaurant

Tel: 6542 2038
12 pm to 3 pm (daily)
6 pm to 10 pm (daily)



恭喜发财

Happy
Lunar New Year
2014