



# YOUR STAYCATION GUIDE @ NSROC CHANGI



# Contents

## **Essential Contact Numbers**

03 [Essential Contact Numbers](#)

## **Bungalows NEW Updates !**

04 [Updates](#)

## **Bungalows Promotion**

06 [Promotions](#)

## **Bungalow Booking & Information**

10 [Bungalow Information](#)

14 [Booking Terms And Conditions](#)

15 [How to make a booking](#)

16 [Rental Rates](#)

17 [Bungalow FAQ](#)

20 [Bungalow House rules](#)

## **Bungalow Self Inventory Check List**

21 [Self Inventory Check List](#)

## **Bungalow Rentals**

22 [Rental / Purchase List](#)

24 [Bungalow Chargeable Items](#)

## **NSRCC Facilities**

28 [Play, Function Rooms, Shops](#)

38 [Dining Facilities](#)

42 [Sea Sports Centre](#)

## **NSRCC Club Magazine**

46 [Resort View](#)

## **Contact Us**

47 [Shuttle Bus Schedule](#)

48 [NSRCC Facilities Directory Map](#)



# Essential Contact Numbers

## Bungalow Reception

Opening Hours: 9am to 5.30pm daily

Booking Hours: 9am to 5.00pm daily



6542 2036  
6543 5702 / 5703 / 5704  
9833 9141 (WhatsApp Only)

## Bungalow Housekeeping Services

Opening Hours: 8.00am to 10.00pm daily

6543 5705 / 5706

## Main Lobby Reception

Opening Hours: 8.00am to 8.00pm daily

6543 5725  
6542 8288

## Bungalow Telephone

XX will be your bungalow unit number

6540 85XX

## Local Calls

Dial '9' followed by the external number

9 XXXX XXXX

## Duty Manager

Available 24 hours a day

*\*Please call when there is an emergency*



9637 4258

## Security Guardhouse

Security Officers are on duty 24 hours a day

*\*Please call when there is an emergency*

6540 8598 / 8599  
Enquiry / Emergency

## AED Set can be found at :

- Clubhouse Main Lobby Reception
- Security Guardhouse
- Lifeguard Office @ Swimming Pool

[Back to Directory ^](#)

# NEW Updates!

## 1. Swimming pools Super chlorination Maintenance

### NOTICE

Kindly take note that Swimming Pools @ NSRCC Changi will be temporarily closed for a 3-day Superchlorination Maintenance on the following dates (between Mon to Wed):

- **02 – 04 November 2026**

We apologise for any inconveniences caused & seek your kind understanding on this matter.

# NEW Updates!

## 2. Laundry Service in NSRCC

Coin operated Washer/Dryer machine. Located at housekeeping Service point.  
For more information, please refer to [page 33](#).



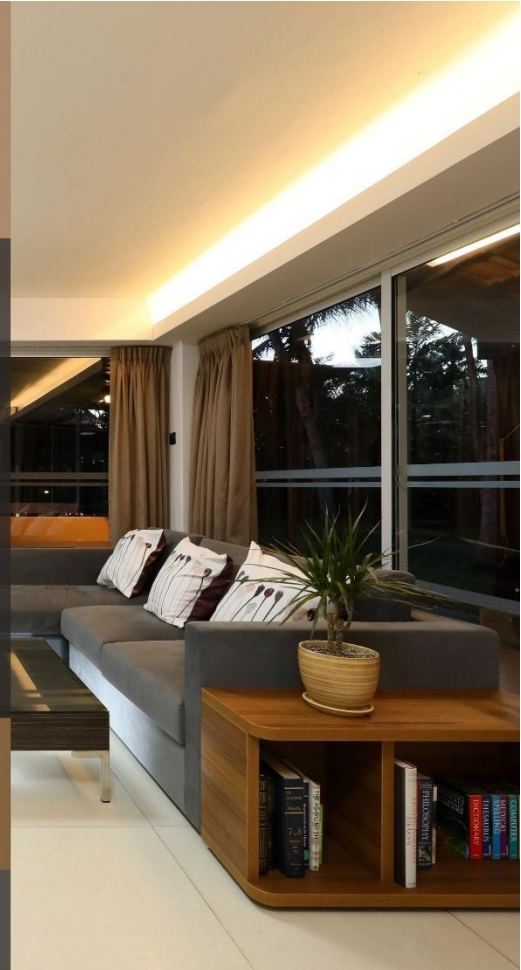
# Bungalows Promotions



## SHORT TERM STAY PACKAGES

- ✓ DURING HIP / HOME RENOVATIONS
- ✓ HOSTING OVERSEAS FAMILY / GUESTS

Space, privacy, and convenience. All in one ready-to-live home.



BOOK NOW: **6542 2036**

Enjoy

**20%**  
Discount

Email : [bungalows@nsrcc.com.sg](mailto:bungalows@nsrcc.com.sg)  
Or walk-in to Bungalow Reception between  
9am to 5pm to find out more.

\*Terms and Conditions Apply.  
\*Mid-term bungalow stay  
\*Min. of 10 nights, max 3 months application subject to approval

Follow us at:



National Service Resort & Country Club  
NSRCC Changi : 10 Changi Coast Walk, Singapore 499739  
[www.nsrcc.com.sg/bungalow](http://www.nsrcc.com.sg/bungalow)

[Next >](#)

# Bungalows Promotions



BOOK YOUR WEEKEND, GET  
EXTRA WEEKDAYS FOR LESS

**50% DISCOUNT**

valid for weekday stays  
(Mon–Thu) before and  
after your weekend booking.

 **Details Below**

- Promotion applicable to both NSRCC's Changi bungalows and Sealand Villa chalets.
- Weekend and weekday nights must be booked as one continuous stay.
- Applicable discount will be refunded at check-out.
- Promotion applies to stays from 1 July 2026. Other terms and conditions apply.



**NSRCC Changi Bungalows**  
WhatsApp at 9833 9141 or  
phone call at 6542 2036



**Sealand Villa**  
WhatsApp at 9159 4946 or  
phone call at 6200 4115

[www.nsrcc.com.sg](http://www.nsrcc.com.sg)

[< Previous](#)

[Next >](#)

# Bungalows Promotions



## Promotion Scenario

Example : **SAFRA Member** make a booking at NSRCC Changi bungalows from Thursday, 9 July check-in to Tuesday, 14 July check-out. The booking rates will be as follows:

	Check-In			Check-Out			Total Amount to be Paid
	9 Jul (Thurs)	10 Jul (Fri)	11 Jul (Sat)	12 Jul (Sun)	13 Jul (Mon)	14 Jul (Tues)	
<b>BEFORE</b> Usual Daily Rate (S\$)	135.16	419.65	419.65	419.65	135.16	135.16	1,664.43
<b>AFTER</b> <b>50% Off-Peak Promotion</b> (S\$)	<b>67.58</b>	419.65	419.65	419.65	<b>67.58</b>	<b>67.58</b>	<b><u>1,461.69</u></b>



- Full payment of the total amount **before discount** is required upon booking confirmation.
- The discounted amount for the Monday and Tuesday night's stay will be **refunded upon check-out**, together with the \$100 security deposit, subject to terms and conditions.

**NSRCC Member** – advance payment is not required.  
The discounted promotional rate will be collected upon check-out.

**BOOK NOW**



**NSRCC Changi Bungalows**  
WhatsApp at 9833 9141 or  
phone call at 6542 2036



**Sealand Villa**  
WhatsApp at 9159 4946 or  
phone call at 6200 4115

[www.nsrcc.com.sg](http://www.nsrcc.com.sg)

[< Previous](#)

[Next >](#)

# Bungalows Promotions



**EXCLUSIVELY  
FOR NSRCC  
BUNGALOW  
GUESTS**



**10% OFF  
@ F&B OUTLETS**

## GLASS HOUSE BEACHFRONT

Halal Mediterranean flavours  
meet local favourites

Daily except Tuesday and  
GHB's event days  
12pm to 3pm; 6pm to 10pm  
☎ 6600 4872

## VIVA LOCA INTERNATIONAL

Mediterranean delights, Asian fusion  
flavours, and hearty North Indian classics

Daily 11am to 12 midnight  
☎ 8322 5626

## FAIRWAY BISTRO (GOLFERS' TERRACE)

Local delights for Breakfast,  
Lunch and Dinner

7.00am to 10.00pm  
(Tue - Sun)  
7.00am to 8.00pm  
(Mon)  
☎ 6970 7614

## STELLA @ SEA SPORTS CENTRE

Alfresco dining with cocktails,  
Western and Fusion dishes

4.00pm to 10.00pm  
(Mon - Fri)  
12.00pm to 10.00pm  
(Sat to Sun & PH)  
☎ 6214 9168

## BISTRO BOWL @ RESORT BOWL

Simple casual dining  
for Lunch & Dinner

10.30am to 9.30pm  
(Sun - Thu, PH)  
10.30am to 10.00pm  
(Fri, Sat, Eve of PH)  
☎ 6543 2247

## ZHENG ZI CHAR @ SEA SPORT CENTRE

Alfresco local Zi Char fare  
by the sea front

12.00pm to 9.00pm  
☎ 8916 8321

## TERMS & CONDITIONS

- Applicable only for a la carte orders of food and drinks (exclude alcoholic drinks)
- Applicable during each respective outlet's operating hours, for dine-in and takeaways
- Cannot be used in conjunction with each respective outlet's existing promotions and discounts
- Present valid Bungalow Pass for verification before billing
- Only 1 valid Bungalow Pass per table bill
- Discount is before Service Charge and/or GST (where applicable)

[< Previous](#)

[Back to Directory ^](#)

# Bungalow Information



[Click here for a 360 Virtual Tour](#)



## Amenities

- 2 cosy bedrooms
  - Bungalow 01 to Bungalow 20 (1 twin room & 1 double room)
  - Bungalow 21 to Bungalow 40 (2 twin rooms)
- 2 shower bathrooms equipped with bath & hand towels, toiletries and hair dryer
- A fully-equipped kitchen that comes with refrigerator, freezer, kettle & microwave oven
- Exclusive use of private barbeque pit
- Fully air-conditioned unit
- Wi-Fi access

[Next >](#)



### Housekeeping Services

Clean sanitised linen is available for replacement upon request. For security purposes, linen replacement is conducted only in the presence of occupants unless prior consent is given.

6543 5705 / 5706

### Laundry

Kindly dry your clothes on the retractable clothes hanger provided at the bungalow veranda.

### Occupancy

Gathering of not more than 20 persons are allowed in each bungalow. A maximum of 8 persons are permitted to stay overnight in each bungalow (Including children below the age of 12).

6543 5702 / 5703 / 5704

### Guest Passes

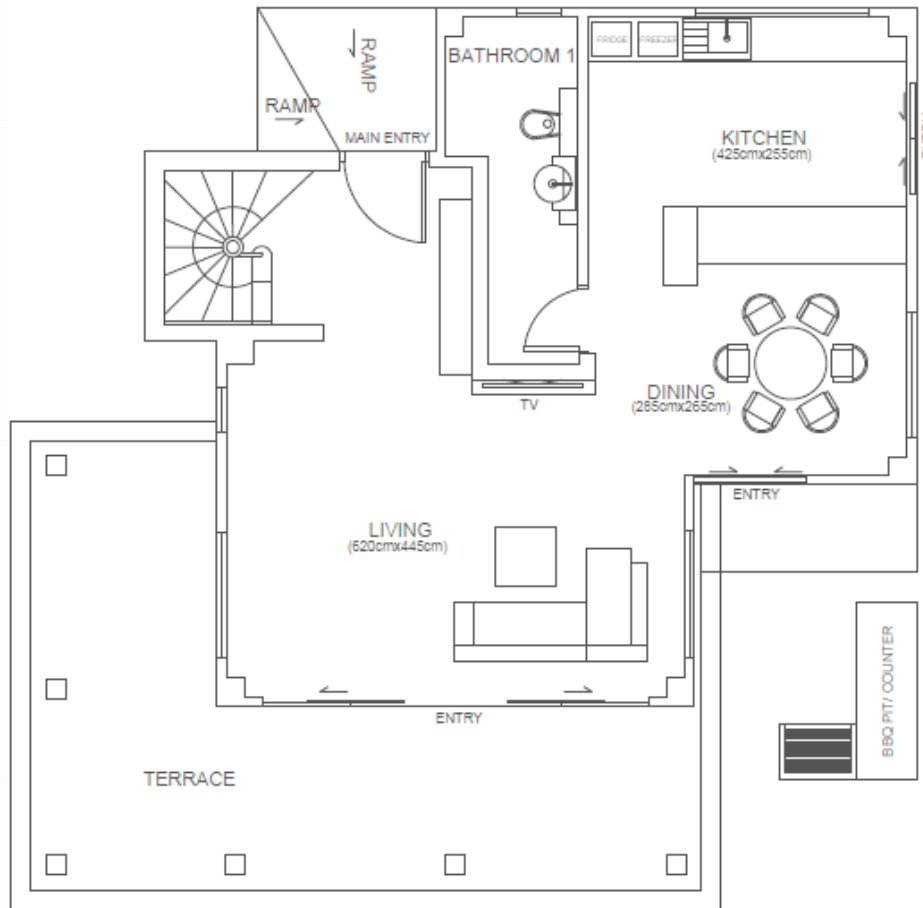
Please keep your Guest Pass with you during your stay. Your identity card should be presented with the pass for booking and entry to club facilities. Please contact Bungalow Reception for assistance.

### Carpark (Bungalow Compound)

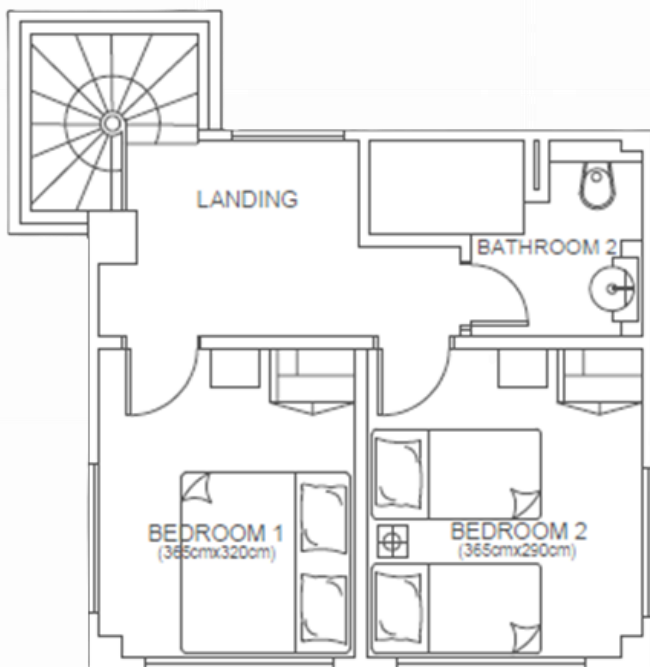
Choice of parking is on a first-come, first-served basis on **yellow** lots only (**red** lots are reserved for corporate bungalows).

6540 8598 / 8599

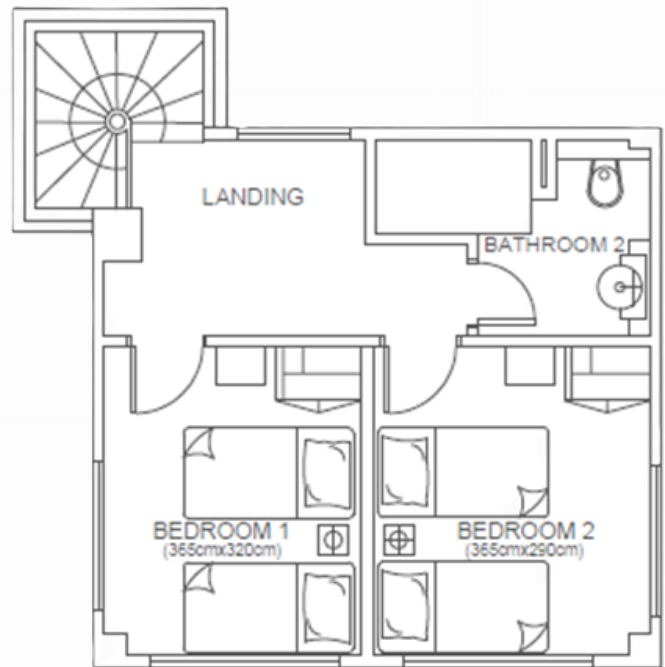
# Bungalow Interior Layout



**1<sup>ST</sup> STOREY LAYOUT PLAN**



**2<sup>ND</sup> STOREY LAYOUT PLAN  
(UNITS 01 TO 20)**



**2<sup>ND</sup> STOREY LAYOUT PLAN  
(UNITS 21 TO 40)**

# Bungalow Units Layout Map



Bungalows Away from Swimming Pool: 01 to 34

Bungalows Near Swimming Pool: 35 to 40

Bungalow 1 to Bungalow 20 (1 twin room & 1 double room)

Bungalow 21 to Bungalow 40 (2 twin rooms)

Corporate Bungalows: 1, 2, 3, 4, 5, 7, 8, 12, 14, 15, 16, 17, 23 & 29  
(Not open to Members or public for booking)

For booking enquiries, please call 6542 2036 / email  
[bungalows@nsrcc.com.sg](mailto:bungalows@nsrcc.com.sg) or send a WhatsApp message 9833 9141.

Or walk-in to Bungalow Reception between 9.00am to 5.00pm.



Nsrcc Bungalows  
WhatsApp contact

[< Previous](#)

[Back to Directory ^](#)

# Booking Terms and Conditions

## 1. RENTAL AND DEPOSIT

- The requirement for booking is a minimum of two (2) nights.
- All payment can be made in Singapore currency by NETS or credit card.
- For any 'No Show' on check-in date, full bungalow rental fees will be charged to member's monthly statement of account. Non- members will not receive refund of rental fees which have been pre-paid.
- The resort reserves the right to vary the rental and deposit rates at any time it deems fit.

## 2. AMENDMENT OF BOOKING

- Amendment of bookings can be made provided adequate notice is given. Minimum notice period to be given are as follows:

Amendment Charges	NO Amendments allowed	20% administrative charge based on the previous booking rate applies for any amendment
OFF-PEAK / SUPER OFF-PEAK / PEAK / SUPER-PEAK / SUPER HOLIDAY	Notice given 21 days or less prior to arrival date.	Notice given more than 21 days prior to arrival date.

- If advise of amendment is not received within the specified time as stated in Clause 2, the amendment shall be treated as last minute cancellation, and will be subjected to conditions stated under 'Cancellations'.
- Booking is non-transferable.

## 3. CANCELLATIONS

- Cancellations are subject to the following charges and conditions:

Cancellation Charges	100% of Bungalow Rental Fees	50% of Bungalow Rental Fees
OFF-PEAK / SUPER OFF-PEAK / PEAK / SUPER-PEAK / SUPER HOLIDAY	Notice given 21 days or less prior to arrival date.	Notice given more than 21 days prior to arrival date.

4. Applicants may amend or cancel their booking at the Resort Bungalow Reception / through telephone at 6542 2036 or WhatsApp 9833 9194 from 9.00am to 5.00pm daily.
5. The Resort reserves the rights not to accept any application and to cancel any booking it deems unfit, and shall not be liable for any damages therefrom.

[Back to Directory ^](#)

# Bungalow Internet Booking

## Booking Period

Advance booking up to:

**6 months** for NSRCC Resort member

**5 months** for MINDEF/SAF personnel / SAFRA member / NSMen / Citizen / Non-Citizen

## How to Book? (Nsrcc Members)

1. Click [here](#)
2. Select dates of your stay only
  - Dates shown in 7 days format
  - Click to proceed to go to confirmation screen
4. Click on confirm after reading agreement to T&C.
5. Key in contactable phone number and valid email address.
6. Click confirm and a confirmation email will be sent to address provided.
7. Payment upon check out

## How to Book? (Non Members - MINDEF/SAF Personnel, SAFRA, NS Men, Citizen & Non-Citizen)

1. Create an account. Click [here](#)
2. Login as Non-member for Online booking.
3. Select dates of your stay only
  - Dates shown in 7 days format
  - Click to proceed to go to payment screen
4. Click on confirm after reading agreement to T&C.
5. Key in Credit card details to submit full payment.
6. Click next.
7. Once payment approved, a confirmation email will be sent to address provided.

Booking condition of In-House stay, please see [Terms and Conditions of Bungalow Stay](#).

For booking enquiries, please call 6542 2036 / email [bungalows@nsrcc.com.sg](mailto:bungalows@nsrcc.com.sg) or send a WhatsApp message [9833 9141](tel:98339141).

Applicants may also make their bookings at the Resort's Bungalow Reception between 9.00am to 5.00pm daily.

[Back to Directory ^](#)

# Rental Rates

All prices quoted below are inclusive of 9% GST:

Rental Fees Per Night for Units Away from Poolside (Bungalow nos 1 to 34 excluding corporate units)				
Categories	OFF PEAK* / SUPER OFF PEAK*	PEAK*	SUPER PEAK*	SUPER HOLIDAY*
NSRCC Members	\$136.25	\$261.60	\$308.47	\$330.27
MINDEF / SAF Personnel	\$147.15	\$288.85	\$335.72	\$357.52
SAFRA Member	\$168.95	\$419.65	\$466.52	\$488.32
NS Men	\$184.21	\$466.52	\$513.39	\$535.19
Citizens	\$252.88	\$495.95	\$535.19	\$556.99
Non-Citizens	\$331.36	\$535.19	\$561.35	\$583.15
Rental Fees Per Night for Units Near Swimming Pool (Bungalow nos 35 to 40 excluding corporate units)				
Categories	OFF PEAK* / SUPER OFF PEAK*	PEAK*	SUPER PEAK*	SUPER HOLIDAY*
NSRCC Members	\$158.05	\$283.40	\$330.27	\$352.07
MINDEF / SAF Personnel	\$168.95	\$310.65	\$357.52	\$379.32
SAFRA Member	\$190.75	\$441.45	\$488.32	\$510.12
NS Men	\$206.01	\$488.32	\$535.19	\$556.99
Citizens	\$274.68	\$517.75	\$556.99	\$578.79
Non-Citizens	\$353.16	\$556.99	\$583.15	\$604.95

\***Off-Peak:** Monday to Thursday (excluding eve of public holidays & public holidays)

\***Super Off Peak:** School holidays (Monday to Thursday)

\***Peak:** Friday to Sunday (including eve of public holidays & public holidays)

\***Super Peak:** School holidays (Friday to Sunday, including eve of public holiday public holidays)

\***Super Holiday:** Eve of & Day of New Year, Chinese New Year and Christmas

View Room Availabilities of the bungalows, click [here](#)

[Back to Directory ^](#)

# Bungalow FAQs

## BOOKING

### Is the bungalow open to public for booking?

Yes.

### Are the bungalows open for viewing?

We do not allow viewings for our Bungalows.

### How many months in advance to book a bungalow?

**6 months** for NSRCC Resort member

**5 months** for MINDEF/SAF personnel / SAFRA member / NSMen / Citizen / Non-Citizen

### How many night is required for booking?

The requirement for booking is minimum of two (2) nights.

One night booking is permitted, subject to availability in meeting specific criteria.

### Is there charges applicable to amend bungalow booking?

A 20% administrative charge based on the previous booking rate applies for any amendment.

For more information, please click [here](#).

### What are the cancellation terms for cancelling booking?

Cancellations are subject to charges and conditions. For more information, please click [here](#).

## CHECK-IN & CHECK-OUT

### What is the check-in and check-out timing?

Check-in Time: 2.00pm to 5.00pm. (For check-ins after 5.00pm, please click [here](#))

Check-out Time: 9.00am to 10.00am

### What is the minimum age for booking and check in?

The minimum age required is 18 years old.

### Can I authorise someone to check-in on my behalf?

Applicant is required to complete the [Authorisation Form](#) for check-in on their behalf. The authorised guest must be 18 years old and above. He or she will have to produce his or her photo ID together with the authorisation form upon check-in.

Booking made under MINDEF(SAF) / Safra Member / NSMen, **MUST** present registered booker's physical SAF card or present his/her Service Status shown in the OneNS portal / SAFRA Card / NS ID upon check-in. In the event if all the above are not met, the room rates will be converted to Citizen Rates for the entire stay.

# Bungalow FAQs

## Can we request for early check-in and/or late check-out?

Requests for early check-in and late check-out are not possible.

## Do I have to clean up the unit before checking-out?

Please ensure the bungalow unit is handed over in a generally clean condition upon check-out. An additional cleaning fee of minimum S\$100 will be levied for excessive spillage, litter and personal bulky items discarded inside the unit.

## GENERAL ENQUIRIES

### Are housekeeping services provided during the 3D2N stay?

No housekeeping services is provided. Clean sanitised linen is available for replacement upon request. For security purposes, linen replacement is conducted only in the presence of occupants unless prior consent is given.

### How many guests are allowed in the bungalow?

20 persons for a gathering at any point of time before 11.00pm. A maximum of 8 persons are permitted to stay overnight in each unit.

### How many vehicles allowed for each bungalow?

Each bungalow booking is entitled to 2 car parking lots. Pre-registration at bungalow reception is required.

1<sup>st</sup> vehicle is complimentary, 2<sup>nd</sup> vehicle is chargeable:

\$6.00 / day - Off-peak [Monday to Thursday]: \$6.00 / day

\$12.00 / day - Peak [Friday to Sunday, including eve of PH, PH & School Holidays]

### Is WI-FI provided in the bungalow?

Yes, there is complimentary WI-FI in the bungalow.

### Are pets allowed in the bungalow?

Pets are not allowed in the bungalow and within the premises of the Resort.

### Is BBQ pit provided in the bungalow?

Yes, it is complimentary for usage during your stay. Also, it is sheltered. The bungalow BBQ pit is Charcoal fired. Charcoal can be purchased from our housekeeping during your stay. Dimension of BBQ pit 20 by 30 inches.

### How many bedrooms in the bungalow?

Units #01 to #20: 1 Double Room & 1 Twin Room

Units #21 to #40: 2 Twin Rooms

### Is the bungalow wheelchair accessible?

Only first floor is accessible; second floor is accessible by stairs.

# Bungalow FAQs

## **Is smoking allowed in the bungalow?**

Smoking is prohibited within all bungalows. There are designated smoking areas in the resort.

## **Is cooking allowed in the bungalow?**

Light cooking / heating up of food is allowed. Induction cooker with stainless steel pot is available for rent from housekeeping.

## **Is external catering allowed?**

Yes, you may engage your preferred caterer at no additional charges. Kindly ensure that the licensed caterer does the buffet line set-up and clear all equipment's and trash within the booking's time frame.

## **Is external tables and chairs allowed?**

Yes, a maximum of 4 tables and 20 chairs is allowed.

## **Is bouncy castle allowed in the bungalow?**

Yes, you can place a small bouncy castle at the size of 3m. It can be placed at the verandah area.

## **Are decorations allowed in the bungalow?**

Elaborate decorations for the celebrations of birthday, wedding, festive holidays, and wake are not allowed in and out of the bungalows. Simple decoration is allowed on designated spots within the bungalow.

## **Are the facilities free to use for bungalow occupants?**

Only swimming pool, fitness centre and basketball court are complimentary. Other facilities are chargeable at guest rates if valid bungalow passes are presented.

## **Is karaoke / sound system or speakers allowed in the bungalow?**

No, is not allowed.

## **Are we allowed to request more than 2 keycards during the stay?**

No. Maximum is only 2 keycards per bungalow.

# Bungalow House Rules



No Pets allowed



No sound system  
or speaker



No Gambling



No vaping/use/  
smoking of  
electronic vaporizers



No Drugs



Uncensored/illegal  
media in all formats  
are not allowed



No durians allowed  
inside the unit



No Drones



DO NOT throw  
hot charcoal into  
the dustbin



Noise level shall  
not exceed  
reasonable level

- Unauthorised electrical wiring, installation of any private audio/visual facility or gas stove/tank are strictly prohibited.
- Indoor furniture must not be moved out of the unit. Furniture to be placed at ORIGINAL position.
- A maximum of 8 persons are permitted to stay overnight in each bungalow. Extra guests must leave the bungalow by 11pm.
- After 11.30pm, occupants MUST maintain the peace and serenity within and around the bungalow.
- Guests are advised to adhere to the Bye-Laws in and around the Club.
- The Resort Management shall not be held responsible for:
  - Any loss of valuables, money or personal effects of occupants.
  - Any damages therefrom.
  - Any injury or incident sustained by occupants during their stay at the bungalow.
- An additional cleaning fee (min \$100.00) may be imposed for excessive stains & dirt, spillage and personal bulky items discarded inside the unit. We seek your co-operation to keep the unit clean, tidy and organized.

The Club Management reserves the right to take appropriate action to charge Occupants for cost of replacement or repairs to damaged or lost items provided in the bungalow, including shortening the duration booked without refund of rental against any Occupant who infringes the rules, regulations or Bye-laws or to disallow any Occupant whom it deems undesirable into the bungalow premises.

[Back to Directory ^](#)

# Bungalow Self Inventory Check List

The following items are provided for your convenience. Please ensure all items are accounted for and in good condition.

**[Charges apply for lost or damaged items.](#)**

S/NO	LIVING & DINING ROOM	Quantity
1	Mahjong Table / Umbrella / Telephone	1 pc each
2	55"/60" LED TV & Remote Control	1 set
3	L-shape 3 Seater Sofa	1 set
4	Throw Cushion	2 pcs
5	Coffee Table / Stand Fan / Wall Clock / Aircon remote control	1 pc each
6	Artificial Plant (Floor Standing)	1 pc each
7	Dining Table / 6 Chairs	1 set
8	Snacks Basket	1 pc
	<b>KITCHENETTE</b>	<b>Quantity</b>
9	Water Decanter / New Sponge & Dish Cloth / Dish Drainer	1 set
10	2-Door Refrigerator	1 pc
11	Chest Freezer	1 pc
12	Electric kettle	1 pc
13	Microwave Oven with Casserole Dish	1 set
14	Wall-mounted Painting on 2nd floor	1 pc
	<b>EACH BEDROOM</b>	<b>Quantity</b>
<b>BW# 1 to 20 – 1 Twin Room &amp; 1 Double Room</b>		
15	Single Bed Set c/w Pillow, Duvet & Bed Runner – Twin Room	2 sets
	King Bed Set c/w Pillow, Duvet & Bed Runner – Double Room	1 set
16	Dressing Stool	1 pc
17	Bedside Table / Telephone	1 pc each
18	Hairdryer / Aircon Remote Control	1 pc each
19	32" LED TV c/w Digital Antenna & Remote Control	1 set
<b>BW# 21 to 40 – 2 Twin Rooms</b>		
20	Single Bed Set c/w Pillow, Duvet & Bed Runner	2 sets
21	Dressing Stool	1 pc
22	Bedside Table / Telephone	1 pc each
23	Hairdryer / Aircon Remote Control	1 pc each
24	32" LED TV c/w Digital Antenna & Remote Control	1 set
	<b>EACH WASHROOM</b>	<b>Quantity</b>
25	Bath Mat	1 pc
26	Bath / Hand Towel	2 pcs each
27	Hand Soap Dispenser / Amenity Tray / Tumbler (2)	1 set
28	Laundry Basket	1 no

[Back to Directory ^](#)

# Rentals / Purchase List

The following is available for your convenience. All items are on a First Come First Served Basis and subject to availability.

Please call Housekeeping (6543 5705/5706). Last order by 9:30pm.

To return rented items, kindly WhatsApp Bungalow reception at 9833 9141 before 1.00pm.

Please ensure that the rented items have been collected by Housekeeping, otherwise the charges will continue throughout your stay.

NO.	FOR RENT	MAX QUANTITY	CHARGES
1	Mahjong Tiles + 1 Pc Mahjong Paper	1 set	Complimentary
2	Mattress with pillow, Thermal blanket and linen	4 set	\$5.00/set/day
3	Additional Pillow	2 pc	\$1.50/pc/day
4	Additional Thermal Blanket	4 pc	\$1.50/pc/day
5	Set of 1 Fiberglass table and 4 Pvc chairs	2 set	\$8.00/set/day
6	1 Fiberglass Table [If not taken as a set in #5]	2 pc	\$5.00/pc/day
7	1 Pvc Chair [If not taken as a set in #5]	10 pc	\$1.50/pc/day
8	Iron and Board Set	1 set	\$1.50/set/day
9	Induction Cooker with Stainless steel Pot	1 set	\$10.00/set/stay

FOR PURCHASE [NON - REFUNDABLE]		CHARGES
10	Bag of Charcoal [3kg]	\$6.00/bag
11	Charcoal Set [4 pieces Fire starters, 1 Bag of Charcoal, 1 Lighter]	\$7.00/set
12	Wire Mesh	\$5.00/pc
13	Aluminium Foil	\$3.50/roll
14	9" BBQ Tong	\$3.50/pc
15	16" BBQ Tong	\$5.00/pc
16	Disposable Paper Plates [50 pieces]	\$5.00/pkt
17	Disposable Paper Cups [50 pieces]	\$5.00/pkt
18	Disposable Plastic Forks [50 pieces]	\$2.00/pkt
19	Disposable Plastic Spoons [50 pieces]	\$2.00/pkt
20	Serviettes [50 pieces]	\$2.00/pkt
21	Mahjong Paper	\$1.00/pc
22	Fire Starters [4 pieces]	\$1.50/box

[Next>](#)

# Rentals / Purchase List

The following is available for your convenience. All items are on a First Come First Served Basis and subject to availability.

Please call Housekeeping (6543 5705/5706). Last order by 9:30pm.

To return rented items, kindly WhatsApp Bungalow reception at 9833 9141 before 1.00pm.

Please ensure that the rented items have been collected by Housekeeping, otherwise the charges will continue throughout your stay.

NO.	FOR RENT - BOARD GAMES	MAX QUANTITY	CHARGES
23	Twister	1 set	\$8.00/set/stay
24	Snakes and Ladders	1 set	\$8.00/set/stay
25	Crocodile Dentist	1 set	\$8.00/set/stay
26	Hungry Hippo	1 set	\$8.00/set/stay
27	Drunken tower	1 set	\$8.00/set/stay
NO.	FOR PURCHASE - GAME DICE		CHARGES
28	Drinking Dice		\$4.00/pc
BUNGALOW COMPOUND PARKING CHARGES [TILL 11AM NEXT DAY]			CHARGES
29	Off-Peak - [Monday to Thursday]		\$6.00/day
30	Peak - [Friday to Sunday, EVE of PH, PH & School Holidays]		\$12.00/day

# Bungalow Chargeable Items

The following items are provided for your convenience.

Please ensure all items are accounted for and in good condition.

**Charges apply for lost or damaged items.**

DESCRIPTION	Quantity	Cost (Piece)
<b>LIVING &amp; DINING HALL</b>		
Glass Main Door	1	\$1,200.00
Glass Mirror Wall - Entrance	1	\$800.00
Mahjong Table	1	\$109.00
Umbrella	1	\$9.00
Telephone	1	\$25.00
55" Panasonic / 60" Sharp LED TV	1	\$1,100.00
TV Remote Control (Panasonic)	1	\$35.00
TV Remote Control (Sharp)	1	\$85.00
A/Con Remote Control (Daikin)	1	\$98.00
Standing Fan	1	\$105.00
Wall Clock	1	\$35.00
Coffee Table	1	\$580.00
Coffee Table Lamination	5 Sides	\$200.00
L-Sharp Sofa Frame Slip Cover	1	\$800.00
L-Sharp Sofa Cover	6	\$150.00
Throw Cushion	2	\$35.00
Snacks Basket	1	\$10.00
Artificial Plant (Floor Standing)	1	\$210.00
Hall Curtain	6	\$200.00
Dining Curtain	2	\$200.00
Glass Top - Coffee Table	1	\$200.00
Glass Top - TV Console	1	\$150.00
Glass Top - Dining Table	1	\$250.00
Dining Chair - PVC Upholstery Arm Rest	12 Arm Rests	\$120.00
Dining Chair - PVC Upholstery Seat	6 Seats	\$180.00
Dining Chair - PVC Upholstery Back Rest	6 Back Rests	\$180.00
Glass Sliding Doors/ Panels	13	\$1,200.00

[Next >](#)

# Bungalow Chargeable Items

Please ensure all items are accounted for and in good condition.

**Charges apply for lost or damaged items.**

DESCRIPTION	Quantity	Cost (Piece)
<b>KITCHEN</b>		
Water Decanter	1	\$2.80
Dish Drainer	1	\$10.00
2-Door Refrigerator	1	\$580.00
Chest Freezer	1	\$330.00
Electric Kettle	1	\$59.00
Induction Cooker	1	\$85.00
Stainless Steel Pot	1	\$30.00
Microwave Oven	1	\$109.00
Casserole Dish	1	\$26.00
25L Pedal Rubbish Bin	1	\$37.00

CUTLERY	Quantity	Cost (Piece)
Spoon	8	\$0.80
Fork	8	\$0.80
Teaspoon	8	\$0.70
Butter Knife	1	\$0.80
Fruit Knife	1	\$1.50
Wooden Turner	1	\$2.00
Wine Opener	1	\$4.80
Can Opener	1	\$2.80
Chopsticks	8	\$0.15
Ladle	1	\$2.00
Ladle w/ Holes	1	\$2.00
Porcelain Mug	8	\$1.50
Porcelain Plate	8	\$4.50
Porcelain Bowl	8	\$4.80
S/S Utility Bowl	2	\$15.00
Chopping Board	1	\$7.50

[< Previous](#)

[Next >](#)

# Bungalow Chargeable Items

Please ensure all items are accounted for and in good condition.

**Charges apply for lost or damaged items.**

DESCRIPTION	Quantity	Cost (Piece)
<b>EACH BEDROOM</b>		
Bed Divan	2	\$580.00
Bed Divan - PVC Upholstery	8 Sides	\$300.00
Spring Mattress Single	2	\$200.00
Bed Sheet Single	2	\$9.50
Duvet Cover Single	2	\$30.00
Duvet Insert Single	2	\$28.00
Mattress Protector Single	2	\$11.50
Bed Runner Single	2	\$30.00
Bed Sheet King	1	\$26.00
Duvet Cover King	1	\$45.00
Duvet Insert King	1	\$55.00
Mattress Topper King	1	\$200.00
Mattress Protector King	1	\$35.00
Bed Runner King	1	\$38.00
Pillow	4	\$9.00
Pillow Case	4	\$3.00
Dressing Mirror	1	\$200.00
Dressing Stool	1	\$77.00
Bedside Table	1	\$450.00
Telephone	1	\$25.00
Hair Dryer	1	\$35.00
32" LED TV - Sharp	1	\$280.00
TV Remote Control (Sharp)	1	\$35.00
A/Con Remote Control (Daikin)	1	\$98.00
Bedroom Curtain	4	\$180.00

# Bungalow Chargeable Items

Please ensure all items are accounted for and in good condition.

**Charges apply for lost or damaged items.**

DESCRIPTION	Quantity	Cost (Piece)
<b>EACH WASHROOM</b>		
Wall Mirror	1	\$200.00
Sink	1	\$250.00
WC	1	\$250.00
WC Water Storage Tank	1	\$250.00
WC Seat Cover	1	\$120.00
Bath Towel	2	\$9.00
Hand Towel	2	\$3.00
Bath Mat	1	\$6.00
Amenity Tray	1	\$8.00
Glass Tumbler	2	\$2.00
Laundry Basket	1	\$9.00

BBQ / PATIO	Quantity	Cost (Piece)
120L Pedal Bin	2	\$90.00
Retractable Clothes Hanger	1	\$150.00
Bamboo Chick (B)	5	\$280.00
Bamboo Chick (S)	1	\$175.00
Entrance Floor Mat	1	\$15.00

RENTALS	Quantity	Cost (Piece)
Foam Mattress	1	\$45.00
Mattress Cover	1	\$15.00
Thermal Blanket	1	\$15.00
Fiberglass Table	1	\$110.00
PVC Chair	1	\$17.00

# Highlights of NSRCC Facilities

(Resort Bowl)



Resort Bowl



Karaoke



Nintendo Switch Play Room



Games Room



Family Zone

\*For enquiries, contact Resort Bowl's Reception at [6545 6365](tel:65456365).

\*For details on facility operation hours and booking, please click [here](#).

# Highlights of NSRCC Facilities

(sports)



## Billiards Room

- ★ 10.00am to 10.00pm (daily)
- ★ Telephone No: 6543 5709



## Squash Courts

- ★ 10.00am to 10.00pm (daily)
- ★ Telephone No: 6543 5725



## Basketball Court

- ★ 8.00am to 8.00pm (daily)
- ★ Telephone No: 6543 5726



## Tennis Court

- ★ 7.00am to 10.00pm (daily)
- ★ Telephone No: 6543 5725



## Pickleball Court

- ★ 7.00am to 10.00pm (daily)
- ★ Telephone No: 6543 5725

\*Dress code applies for entry to certain facilities. Slippers, sandals, singlets and shorts are not permitted. Valid bungalow pass / Membership card is required for booking at the Main Lobby Reception.

# Highlight of NSRCC Facilities

## (Bicycle Rental)



## Bicycle Rental

### Operating Hours:

9.00am to 5pm (daily)

\*Rental is available at bungalow reception.  
(available for NSRCC Members and valid bungalow pass holders)

Telephone No: 6542 2036

\*2 types of bicycles available: BMX & Mountain Bike  
(an additional \$5 onetime charge for bike with child seat)

## Rental Rates

Type of Rental	Hourly	Night	Full Day
Rental Timing	During Bungalow Operating Hours	1700hrs to 1000hrs next day	1000hrs to 1000hrs next day
Cost	S\$8/-	S\$24/-	S\$40/-

Ride to explore nearby attractions~ click [here](#)

# Highlight of Nearby attractions



## Changi Jurassic Mile

- ★ Cycling: 2.6km, 8mins
- ★ Walking: 2.7km, 37 mins



## Bedok Jetty

- ★ Cycling: 4.5km, 13mins
- ★ Walking: 4.8km, 1 hour 5 mins



## East Coast Lagoon Food Village

- ★ Cycling: 5km, 15mins
- ★ Walking: 5.1km, 1 hour 9 mins



## East Coast Lagoon Food Village

- ★ Cycling: 7.5km, 22mins
- ★ Walking: 7.9km, 1 hour 46 mins

# Highlight of NSRCC Facilities

(Swimming Pools)



## Swimming Pool

### Operating Hours:

7.00am to 8.30pm (Tuesday to Sunday & Public Holiday's)

12.00pm to 8.30pm (Monday)\*

\*Weekly maintenance of the Swimming Pool is performed every Monday.

Telephone No: 6543 5725/5726

\*Only proper swimming attire is allowed.

\*Free entry for valid bungalow pass holders.

For a virtual tour of the swimming pool, click [here](#).

## Swimming Lessons

Click [here](#) for more information.

# Highlight of NSRCC Facilities

(Fitness Centre)



## Fitness Centre

### Operating Hours:

7.00am to 9.30pm (Weekdays)

7.00 am to 8.30pm (Weekends & public holidays)

*(Children below 12 years old are prohibited. Age 12 to 14 years old are to be accompanied by an adult.)*

Telephone No.: 6543 5715

\*Only proper fitness attire is allowed.

\*Free entry for valid bungalow pass holders.

## Personal Training Programmes

Personal training is a fantastic way to get motivated and inspired on a 1-on-1 or in a small group. Our fully qualified team of Personal Trainers will help you to achieve your fitness goals, whether be it sports-specific training or adding variety to your existing routine.

Click [here](#) to see our Personal Trainer's Profiles.

Click [here](#) to see the rates.

Click [here](#) to view our full list of equipment.

For enquiries, contact our Fitness Centre at 6543 5715 or email [fitness@nsrcc.com.sg](mailto:fitness@nsrcc.com.sg)

# Highlight of NSRCC Facilities (Recreation)



## Children's Playground

Located within the bungalow area, this playground helps children to develop physical coordination, strength and flexibility, as well as provide leisure and enjoyment.



## The Gallery

Need to take in-between breaks? Simply lounge on one of our comfortable sofas at the Gallery or chit-chat over a small snack.

# Highlight of NSRCC Facilities

(Function Rooms)



## Function rooms for Events

Our comprehensive services include:

- M.I.C.E (Meetings, Incentives, Conferences and Exhibitions)
- Corporate/Private Lunch/Dinner/Cocktail Reception
- Solemnisation/Wedding Reception
- Corporate Golf Tournament

Private Event Venue: Function Rooms at NSRCC

Available venues at NSRCC Changi:

- [The Heron](#)
- The Cockpit
- [Oriole 1, 2](#) & 3
- [Falcon](#)
- [Corvette](#)

Available venues at NSRCC Kranji:

- The Sanctuary I
- The Sanctuary II

For booking enquiries, please call 6543 5082 / 5749 or WhatsApp 9619 4057.

Email: [events@nsrcc.com.sg](mailto:events@nsrcc.com.sg)

For more information's, please click [here](#).

# Highlight of NSRCC Facilities

(Shops in NSRCC Changi)



## **Eastern Pro-Shop @ Resort Bowl**

### **Operating Hours:**

2.00pm to 10.00pm (Tue-Thu, Sun & Public Holidays)

2.00pm to 11.00pm (Fri, Sat & Eve of Public Holidays)

Closed on Mon

Telephone No.: 9451 3295

## **Leonian (Golf Pro-Shop) @ Fairway Bistro**

### **Operating Hours:**

7.00am to 7.00pm (Monday - Sunday)

Telephone No.: 6543 2051

## **Uncle Hassan Minimart (next to Fitness Centre)**

### **Operating Hours:**

1:30pm to 7:30pm (Tue-Thu, Sat-Sun, PH)\*

2:00pm to 7:30pm (Fri)

\* Closed every Monday

# Highlight of NSRCC Facilities

(Laundry Service in NSRCC Changi)



## Laundry Service @ Housekeeping Service Point

### Operating Hours:

24 Hours (daily)

Price: \$5 per usage (Strictly ONLY accept NEW \$1 coin)

This is a 24/7 coin operated Do-It-Yourself (DIY) laundry service. It comes with 2 washer and 1 Electric dryer machine.

- Washer (min.10kg capacity, with auto-dosing detergent and softener)
- Electric dryer(min.10kg capacity)

# Food & Beverage Outlets @ NSRCC Changi



## Fairway Bistro

Operating Hours:

Monday

7.00am to 8.00pm, Last order at 7.00pm

Tuesday to Sunday

7.00am to 10.00pm, Last order at 9.00pm

Telephone: 6970 7614

\*T&Cs for Member's Discount:

- For Ala Carte orders only - please check with outlet staff on applicable items.
- Not applicable to outlet's promotion menu/offer.
- Member must be present with physical Membership Card.
- Member's Discount is applicable for 1 table bill only - please check with outlet staff on table size capping.

[Next >](#)

# Food & Beverage Outlets @ NSRCC Changi



## Bistro Bowl Café

Operating Hours:

Monday to Thursday

10.30am to 9.30pm, Last order at 9.00pm

Friday, Saturday & Eve of Public Holidays

10.30am to 10.00pm, Last order at 9.30pm

Sunday, Public Holidays & School Holidays

10.30am to 9.30pm, Last orders at 9.00pm

Telephone No: 6543 2247

\*T&Cs for Member's Discount:

- For Ala Carte orders only - please check with outlet staff on applicable items.
- Not applicable to outlet's promotion menu/offer.
- Member must be present with physical Membership Card.
- Member's Discount is applicable for 1 table bill only - please check with outlet staff on table size capping.

[< Previous](#)

[Next >](#)

# Food & Beverage Outlets @ NSRCC Changi



## Glasshouse Beachfront

Operating Hours:

Daily except Tuesday and GHB's event days

11.30am to 3pm, Last orders at 2.30pm

6.00pm to 10.00pm, Last orders at 9.30pm

Telephone No: 6600 4872

Click here to view the [menu](#)!

The first Halal outlet at NSRCC Changi, Glasshouse Beachfront offers a thoughtfully curated menu ranging from hearty mains to light bites, perfect for families and gatherings of all kinds.

\*T&Cs for Member's Discount:

- For Ala Carte orders only - please check with outlet staff on applicable items.
- Not applicable to outlet's promotion menu/offer.
- Member must be present with physical Membership Card.

[< Previous](#)

[Next >](#)

# Food & Beverage Outlets @ NSRCC Changi



## Viva Loca International

Operating Hours:

Daily – 11am to Midnight

Last order for Food: 10.30pm

Last order for Drinks: 11.30pm

Telephone No: 8322 5626

Click here to view the [menu!](#)

Viva Loca International – a vibrant new dining concept located at Level 5 of NSRCC Changi Sky Range! Whether you're in the mood for Mediterranean delights, Asian fusion flavours, or hearty North Indian classics, Viva Loca brings you an exciting mix of light bites and main courses.

\*T&Cs for Member's Discount:

- For Ala Carte orders only - please check with outlet staff on applicable items.
- Not applicable to outlet's promotion menu/offer.
- Member must be present with physical Membership Card.
- Member's Discount is applicable for 1 table bill only - please check with outlet staff on table size capping.

[< Previous](#)

[Next >](#)

# Food & Beverage Outlets @ Sea Sports Centre



## Stella

Operating Hours:

Monday to Friday

4.00pm to 10.30pm, Last order at 9:30pm

Saturday, Sunday & Public Holiday's

12.00pm to 10.00pm, Last order at 9:30pm

Telephone No: 6214 9168

For more information's, please click [here](#)

\*T&Cs for Member's Discount:

- For Ala Carte orders only - please check with outlet staff on applicable items.
- Not applicable to outlet's promotion menu/offer.
- Member must be present with physical Membership Card.
- Member's Discount is applicable for 1 table bill only - please check with outlet staff on table size capping.
- Members are able to charge their bill to the in-house account.

[< Previous](#)

[Next >](#)

# Food & Beverage Outlets @ Sea Sports Centre



## Zheng Zichar

Operating Hours:

Monday to Sunday

12.00pm to 9.00pm, Last order at 8:30pm

Telephone No: 8916 8321

View the full menu [here](#).

For more information's, please click [here](#)

\*T&Cs for Member's Discount:

- For Ala Carte orders only - please check with outlet staff on applicable items.
- Not applicable to outlet's promotion menu/offer.
- Member must be present with physical Membership Card.
- Member's Discount is applicable for 1 table bill only - please check with outlet staff on table size capping.

[< Previous](#)

[Next >](#)

# Food & Beverage Outlets @ Sea Sports Centre



## Sailor's Café

Operating Hours:

Monday to Friday

12.00pm to 5.00pm, Last order at 4.30pm

View the full menu [here](#).

\*T&Cs for Member's Discount:

- For Ala Carte orders only - please check with outlet staff on applicable items.
- Not applicable to outlet's promotion menu/offer.
- Member must be present with physical Membership Card.

# Sea Sports Centre



## Sea Sports Centre

Discover the NSRCC Sea Sports Centre, a place for unbridled fun and adventure for sailing enthusiasts and sea-loving folks. Comfortably nestled before the entrance to the main NSRCC clubhouse, the facility provides opportunities for members to enjoy the sun, sea and surf through various sea sports activities, programmes, and competitions.

Telephone: 6445 5108

Email: [reception@constantwind.com](mailto:reception@constantwind.com)

Events and promotions, Click [here](#) for more details.

Click the links below for rental charges such as Windsurfing, Sailing and stand up paddle.

- [Rental charges: Off-peak](#)
- [Rental charges: Peak](#)

[Back to Directory ^](#)

# NSRCC Club Magazine



Our Resort View newsletter is now available in digital format on a monthly basis.

Read our latest club magazine <https://www.nsrcc.com.sg/club-magazine>

Happy reading!

[Back to Directory ^](#)



# NSRCC SHUTTLE BUS SCHEDULE

WEEKDAYS, WEEKENDS & PUBLIC HOLIDAYS	
DEPARTURE TIMINGS	
From Tanah Merah MRT (Exit A)	From NSRCC Changi (Main Lobby)
0815*	0945
0845	1015
1000	1230
1030	1300
1100	1330
1215	1415
1245	1515
1315	1545
1345	1630
1430	1730*
1530	1800
1600	1830
1700	1915
1815	2015
1845	2045
1945	2145
2030	2310
2200	-

[\*] For Weekends & Public Holidays only

**Pick up point @ NSRCC [Main Lobby]**

**Pick up point @ TANAH MERAH [MRT EXIT A]**

Please arrive at the pick-up point 5 mins before departure time

For more information, please click [here](#).

[Back to Directory ^](#)

# NSRCC Facilities Directory



**LEGEND**

- |                   |                |                |                  |                           |                                |                   |                       |                    |
|-------------------|----------------|----------------|------------------|---------------------------|--------------------------------|-------------------|-----------------------|--------------------|
| GOLF RECEPTION    | FITNESS CENTRE | BOWLING CENTRE | BICYCLE RENTAL   | RESTAURANT /FUNCTION HALL | GOLF ACADEMIES AND RETAIL      | MAIN LOBBY        | HERON AND THE COCKPIT | BUNGALOW RECEPTION |
| GOLF BAG DROP OFF | SWIMMING POOL  | SQUASH COURT   | GOLFERS' TERRACE | UNCLE HASSAN MINIMART     | CHILDREN'S PLAYGROUND          | MEMBERSHIP CENTRE | Orle 1 & 2            | BUNGALOWS 1-40     |
| GOLF ACADEMY      | WADING POOL    | BILLIARDS ROOM | BISTRO           | GOLF PRO SHOP             | KARAOKE FAMILY ZONE GAMES ROOM | FALCON & CORVETTE |                       |                    |